

**TYPICAL ELEVATION**

THIS PRODUCT APPROVAL DRAWING IS A TABULATED PERFORMANCE ANALYSIS OF THE INDIVIDUAL COMPONENTS AND DOES NOT CONTAIN INFORMATION ON EACH PROJECT SITE SPECIFIC CONDITION. STRUCTURAL, WATERPROOFING, SEALING, GUARD, AESTHETICS AND/OR OTHER MISCELLANEOUS REQUIREMENTS MUST BE COORDINATED AND APPROVED BY THE AUTHORITY HAVING JURISDICTION.

**NOTE:**  
INSTALLATIONS CAN BE ORIENTED VERTICALLY OR HORIZONTALLY AS SHOWN ABOVE.

**OGT-700 WINDOW WALL SYSTEM**

THIS STRUCTURALLY GLAZED SYSTEM IS RATED FOR LARGE & SMALL MISSILE IMPACT SHUTTERS ARE NOT REQUIRED IN HVHZ REQUIREMENTS.

ALL CHARTS IN THIS DOCUMENT DISPLAY ALLOWABLE STRESS DESIGN (ASD) CAPACITY OF THE COMPONENT THAT ARE BING SELECTED.

GUARD REQUIREMENTS SHALL BE REVIEWED ON A SITE SPECIFIC BASIS.

THIS PRODUCT HAS BEEN DESIGNED AND TESTED IN COMPLIANCE WITH THE REQUIREMENTS OF THE 2020 (7TH EDITION) FLORIDA BUILDING CODE (FBC) HIGH VELOCITY HURRICANE ZONE (HVHZ).

WOOD BUCKS BY OTHERS, MUST BE ANCHORED PROPERLY TO TRANSFER LOADS TO THE STRUCTURE.

ANCHORS SHALL BE AS LISTED, SPACED AS SHOWN ON DETAILS, ANCHORS EMBEDMENT TO BASE MATERIAL SHALL BE BEYOND WALL DRESSING OR STUCCO.

ALL SHIMS TO BE HIGH IMPACT, NON-METALLIC AND NON-COMPRESSIBLE.

MATERIALS INCLUDING BUT NOT LIMITED TO STEEL/METAL SCREWS, THAT COME INTO CONTACT WITH OTHER DISSIMILAR MATERIALS SHALL MEET THE REQUIREMENTS OF THE FLORIDA BUILDING CODE.

**INSTRUCTIONS:**

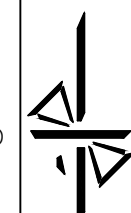
- USE CHARTS AS FOLLOWS.
- STEP 1** DETERMINE DESIGN WIND LOAD REQUIREMENT BASED ON WIND VELOCITY, BLDG. HEIGHT, BLDG. GEOMETRY, WIND ZONE USING APPLICABLE ASCE 7 STANDARD. SEE LOCAL MUNICIPALITY ORDINANCES FOR MORE STRINGENT REQUIREMENTS AS APPLICABLE.
- STEP 2** CHECK GLASS TABLE ON SHEET C02 FOR THE CAPACITY OF EACH GLASS OPTIONS AND GEOMETRY.
- STEP 3** CHECK MULLION TABLE ON SHEET C03 FOR THE CAPACITY OF EACH MULLION OPTIONS AND GEOMETRY FOR VERTICALLY LOADED MULLIONS.
- STEP 3.1** USE TABLE ON SHEET C04 FOR HORIZONTALLY LOADED MULLION.
- STEP 4** CHECK MULLION TABLE ON SHEET C05 FOR THE CAPACITY OF CONNECTION OPTIONS AND GEOMETRY.
- STEP 5** FOR EACH OPENING, THE LOWEST VALUE SELECTED FROM EACH CHART SHALL CONTROL THE CAPACITY OF THE ENTIRE SYSTEM.

**TABLE OF CONTENT:**

C-01	COVER PAGE
C-02	GLASS CHART
C-03	VERTICAL MULLION CHART
C-04	HORIZONTAL MULLION CHART
C-05	ANCHORING CHART
D-01	DETAILS
D-02	DETAILS
D-03	DETAILS
D-04	DETAILS
BOM01	BILL OF MATERIAL
ISO-01	ISOMETRIC
ISO-02	ISOMETRIC

SPACE FOR COMPLIANCE NOTES

**COMPANY INFO**  
Melchor Consultation Services, LLC.  
PHONE No.: 305-343-3622  
EMAIL: CARLOS@MELCHORCS.COM



**DRF / ENG**  
P.T. / C.M.  
**YEAR**  
FBC 2020  
**PRODUCT**  
OGT-700

**PRODUCT LINE DESCRIPTION**  
OGT - 700 WINDOW WALL SYSTEM  
LARGE MISSILE IMPACT

**MANUFACTURER**  
OGT WINDOW PRODUCTS, LLC  
6910 NW 42ND STREET  
MIAMI, FL 33166

REVISION #	DATE	COMMENT

CARLOS MELCHOR  
FL P.E. # 81344  
C.A.N. # 32186  
DRAWINGS ARE VALID ONLY WITH A DIGITAL SIGNATURE

**FL#39158**

SPACE FOR APPROVER STAMP

**DRAWING INFO**  
PAGE: C01

SEALED 06-15-21

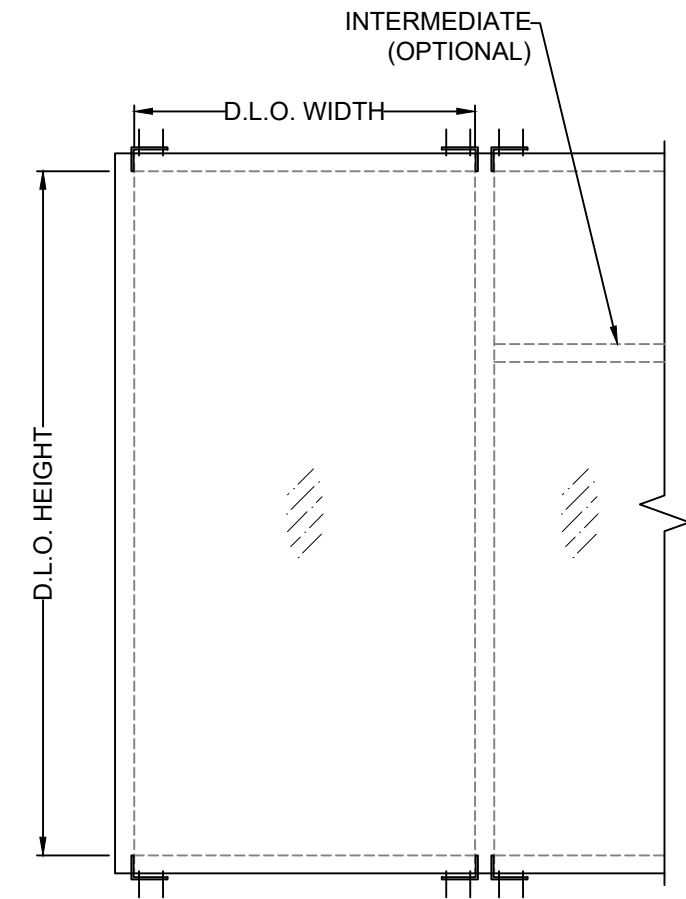
GLASS SELECTION CHART

SPAN	D.L.O.	SPACING	D.L.O.	LAMINATED - G2 (PSF)	INSULATED - G2I (PSF)
120"	114"	48"	44 3/4"	110.0	110.0
		54"	50 3/4"	110.0	110.0
		60"	56 3/4"	110.0	110.0
		68"	64 3/4"	110.0	110.0
		79"	75 3/4"	98.9	103.5
		82"	78 3/4"	88.2	92.3
		95"	91 3/4"	82.6	86.5
132"	126"	36"	32 3/4"	110.0	110.0
		42"	38 3/4"	110.0	110.0
		48"	44 3/4"	110.0	110.0
		54"	50 3/4"	110.0	110.0
		60"	56 3/4"	110.0	110.0
		68"	64 3/4"	110.0	110.0
		79"	75 3/4"	85.4	89.4
144"	138"	36"	32 3/4"	110.0	110.0
		42"	38 3/4"	110.0	110.0
		48"	44 3/4"	110.0	110.0
		54"	50 3/4"	99.8	104.4
		60"	56 3/4"	110.0	110.0
		68"	64 3/4"	97.7	102.2
		79"	75 3/4"	75.2	78.7
156"	150"	30"	26 3/4"	110.0	110.0
		36"	32 3/4"	110.0	110.0
		42"	38 3/4"	110.0	110.0
		48"	44 3/4"	110.0	110.0
		54"	50 3/4"	110.0	110.0
		60"	56 3/4"	109.1	110.0
		68"	64 3/4"	87.7	91.8

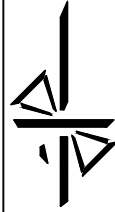
GLASS SELECTION CHART

SPAN	D.L.O.	SPACING	D.L.O.	LAMINATED - G2 (PSF)	INSULATED - G2I (PSF)
168"	162"	36"	26 3/4"	110.0	110.0
		42"	32 3/4"	110.0	110.0
		48"	38 3/4"	110.0	110.0
		54"	44 3/4"	110.0	110.0
		60"	50 3/4"	110.0	110.0
		68"	56 3/4"	99.3	104.0
		79"	64 3/4"	79.6	83.3
		180"	174"	24"	20 3/4"
30"	26 3/4"	100.0		100.0	
36"	32 3/4"	100.0		100.0	
42"	38 3/4"	100.0		100.0	
48"	44 3/4"	100.0		100.0	
54"	50 3/4"	100.0		100.0	
60"	56 3/4"	100.0		100.0	
192"	186"	24"		20 3/4"	100.0
		30"	26 3/4"	100.0	100.0
		36"	32 3/4"	100.0	100.0
		42"	38 3/4"	100.0	100.0
		48"	44 3/4"	100.0	100.0
		54"	50 3/4"	100.0	100.0
		60"	56 3/4"	94.4	98.8

SPACE FOR COMPLIANCE NOTES



**COMPANY INFO**  
 Melchor Consultation Services, LLC.  
 PHONE No.: 305-343-3622  
 EMAIL: CARLOS@MELCHORCS.COM



**DRF / ENG**  
 P.T. / C.M.  
 YEAR  
 FBC 2020  
**PRODUCT**  
 OGT-700

**PRODUCT LINE DESCRIPTION**  
 OGT - 700 WINDOW WALL SYSTEM  
 LARGE MISSILE IMPACT

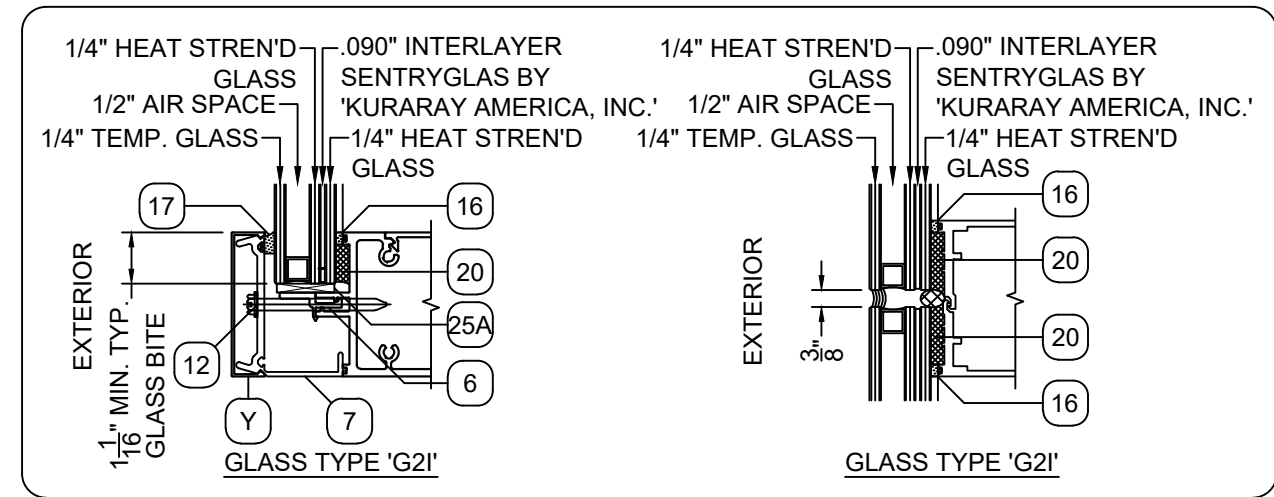
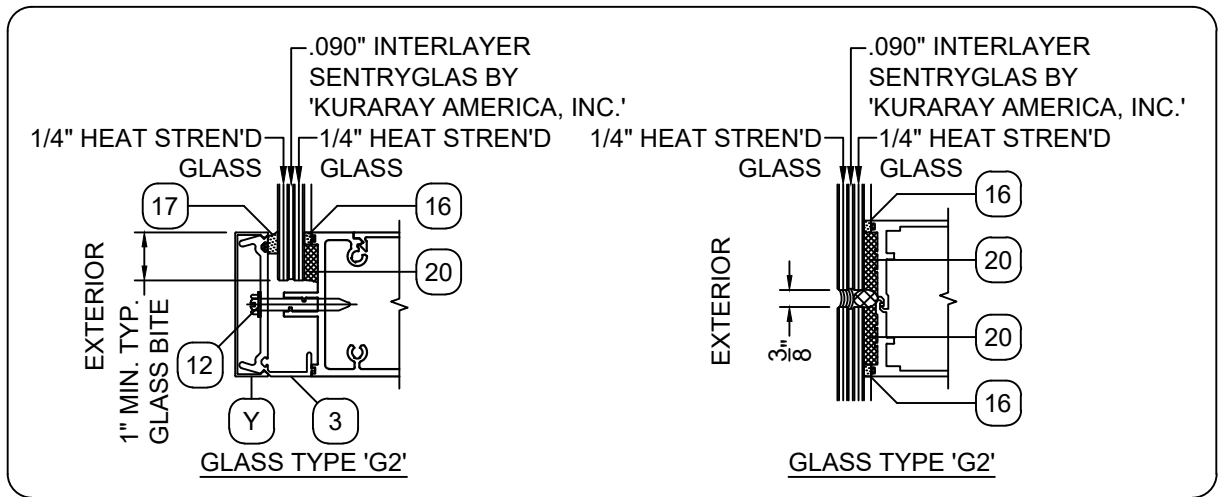
**MANUFACTURER**  
 OGT WINDOW PRODUCTS, LLC  
 6910 NW 42ND STREET  
 MIAMI, FL 33166

REVISION #	DATE	COMMENT

CARLOS MELCHOR  
 FL P.E. # 81344  
 C.A.N. # 32186  
 DRAWINGS ARE VALID ONLY WITH A DIGITAL SIGNATURE

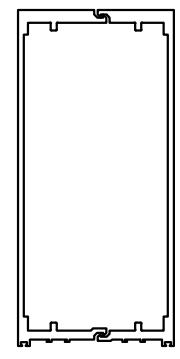
FL#39158

SPACE FOR APPROVER STAMP

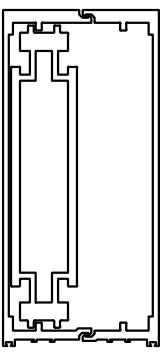


VERTICAL MULLION LOAD CAPACITY - PSF

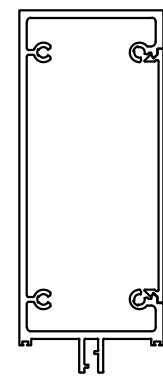
NOMINAL DIMENSIONS		JAMB 'J1' MULL 'M1'	JAMB 'J1' MULL 'M2'	JAMB 'J1' MULL 'M3'	JAMB 'J1' MULL 'M4'	JAMB 'J2' MULL 'M5'
FRAME HEIGHT	WIDTH (W)	EXT. (+) INT. (-)	EXT. (+) INT. (-)	EXT. (+) INT. (-)	EXT. (+) INT. (-)	EXT. (+) INT. (-)
120"	48"	110.0	110.0	110.0	110.0	110.0
	54"	110.0	110.0	110.0	110.0	110.0
	60"	110.0	110.0	110.0	110.0	110.0
	68"	99.3	110.0	110.0	110.0	110.0
	79"	85.5	110.0	110.0	110.0	110.0
	82"	82.4	110.0	110.0	110.0	110.0
	95"	71.1	108.6	110.0	110.0	110.0
132"	36"	110.0	110.0	110.0	110.0	110.0
	42"	110.0	110.0	110.0	110.0	110.0
	48"	110.0	110.0	110.0	110.0	110.0
	54"	102.0	110.0	110.0	110.0	110.0
	60"	91.8	110.0	110.0	110.0	110.0
	68"	81.0	110.0	110.0	110.0	110.0
	79"	69.7	106.5	110.0	110.0	110.0
144"	36"	110.0	110.0	110.0	110.0	110.0
	42"	108.8	110.0	110.0	110.0	110.0
	48"	95.2	110.0	110.0	110.0	110.0
	54"	84.6	110.0	110.0	110.0	110.0
	60"	76.2	110.0	110.0	110.0	110.0
	68"	67.2	102.6	110.0	110.0	110.0
	79"	57.8	88.3	110.0	110.0	110.0
156"	30"	110.0	110.0	110.0	110.0	110.0
	36"	106.8	110.0	110.0	110.0	110.0
	42"	91.5	110.0	110.0	110.0	110.0
	48"	80.1	110.0	110.0	110.0	110.0
	54"	71.2	107.6	110.0	110.0	110.0
	60"	64.1	96.8	110.0	110.0	110.0
	68"	56.5	85.4	110.0	110.0	110.0
168"	30"	103.7	110.0	110.0	110.0	110.0
	36"	86.4	110.0	110.0	110.0	110.0
	42"	74.1	110.0	110.0	110.0	110.0
	48"	64.8	96.9	110.0	110.0	110.0
	54"	57.6	86.1	110.0	110.0	110.0
	60"	51.9	77.5	103.1	103.0	110.0
	68"	45.8	68.4	91.0	90.9	110.0
180"	24"	100.0	100.0	100.0	100.0	100.0
	30"	84.3	100.0	100.0	100.0	100.0
	36"	70.3	100.0	100.0	100.0	100.0
	42"	60.2	90.0	100.0	100.0	100.0
	48"	52.7	78.8	100.0	100.0	100.0
	54"	46.9	70.0	93.2	93.1	100.0
	60"	42.2	63.0	83.8	83.8	100.0
192"	24"	86.9	100.0	100.0	100.0	100.0
	30"	69.5	100.0	100.0	100.0	100.0
	36"	57.9	86.6	100.0	100.0	100.0
	42"	49.6	74.2	98.7	98.6	100.0
	48"	43.4	64.9	86.4	86.3	100.0
54"	38.6	57.7	76.8	76.7	100.0	
60"	34.7	51.9	69.1	69.0	100.0	



MULLION 'M1' & 'J1' NO REINF.	
1x IN^4	Sx IN^3
23.7783	6.435

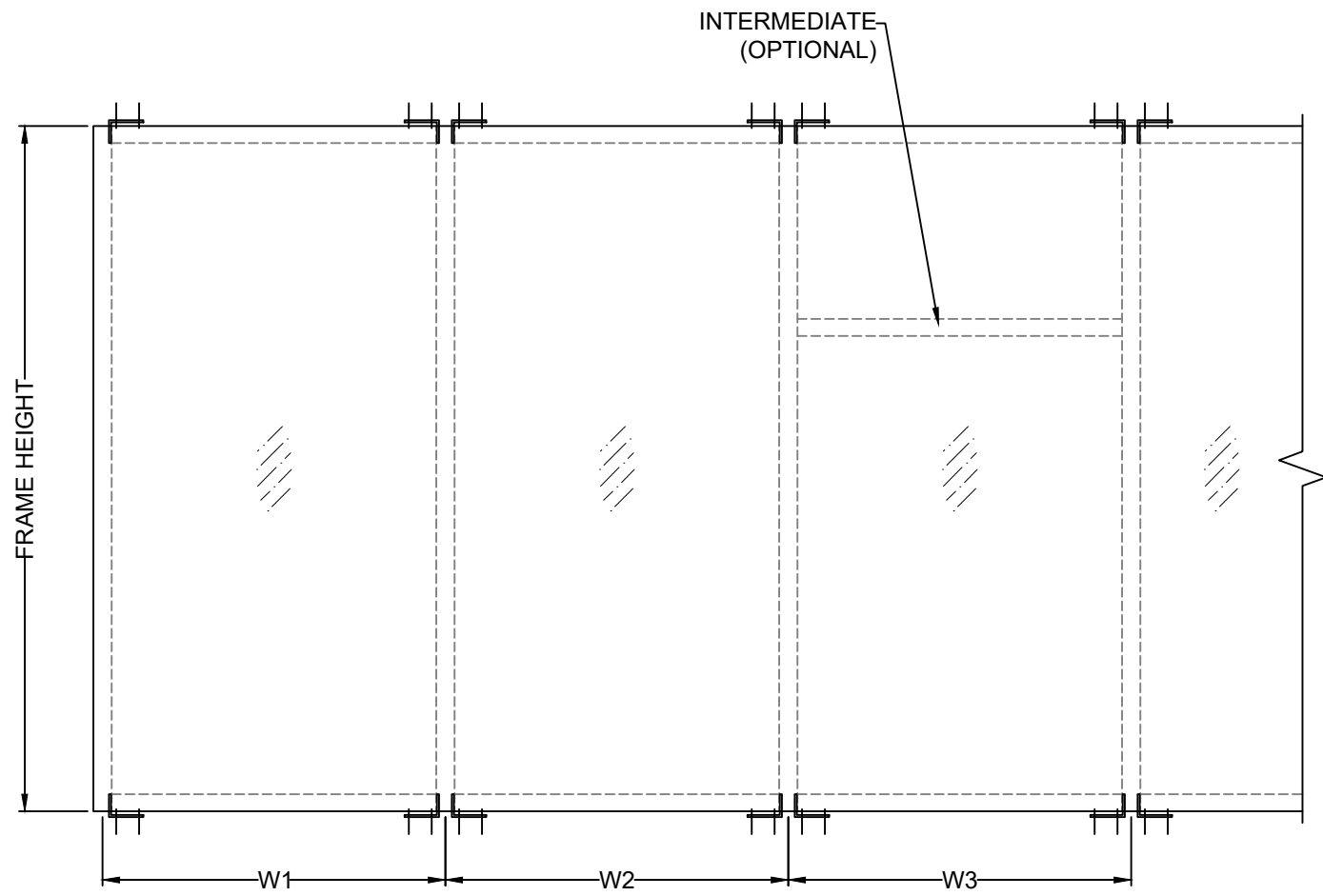


MULLION 'M2' & 'J2' ALUM. REINF.	
1x IN^4	Sx IN^3
35.5415	9.829



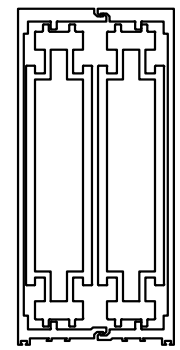
HEAD & SILL & INTERMEDIATE NO REINF.	
1x IN^4	Sx IN^3
22.7340	5.841

SPACE FOR COMPLIANCE NOTES

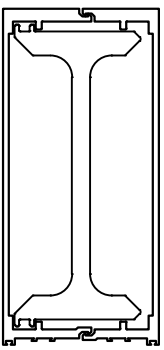


WIDTH (W) = W1  
AT FRAME JAMB

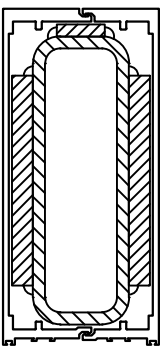
WIDTH (W) =  $\frac{W2 + W3}{2}$   
AT FRAME MULLION



MULLION 'M3' ALUM. REINF.	
1x IN^4	Sx IN^3
47.2767	13.178



MULLION 'M4' ALUM. REINF.	
1x IN^4	Sx IN^3
47.2443	13.129



MULLION 'M5' STEEL REINF.	
ALUMINUM	
1x IN^4	Sx IN^3
23.7783	6.435
STEEL	
1x IN^4	Sx IN^3
22.0275	6.998

SPACE FOR APPROVER STAMP

FL#39158

**COMPANY INFO**  
Melchor Consultation Services, LLC.  
PHONE No.: 305-343-3622  
EMAIL: CARLOS@MELCHORCS.COM

**DRF / ENG**  
P.T. / C.M.  
**YEAR**  
FBC 2020  
**PRODUCT**  
OGT-700

**PRODUCT LINE DESCRIPTION**  
OGT - 700 WINDOW WALL SYSTEM  
LARGE MISSILE IMPACT

**MANUFACTURER**  
OGT WINDOW PRODUCTS, LLC  
6910 NW 42ND STREET  
MIAMI, FL 33166

REVISION	
#	DATE

CARLOS MELCHOR  
FL P.E. # 81344  
C.A.N. # 32186  
DRAWINGS ARE VALID ONLY  
WITH A DIGITAL SIGNATURE

SEALED 06-15-21

**DRAWING INFO**  
PAGE: C03

HORIZONTAL MULLION LOAD CAPACITY - PSF

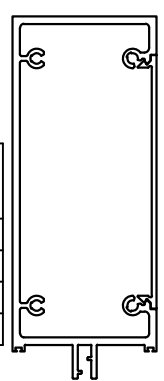
NOMINAL DIMENSIONS		MULL 'M1'	MULL 'M2'	MULL 'M3'	MULL 'M4'	MULL 'M5'	'HJ1' (M2)	'HJ2' (M3)
FRAME SPAN	WIDTH (W)	EXT. (+) INT. (-)	EXT. (+) INT. (-)	EXT. (+) INT. (-)	EXT. (+) INT. (-)	EXT. (+) INT. (-)	EXT. (+) INT. (-)	EXT. (+) INT. (-)
120"	48"	110.0	110.0	110.0	110.0	110.0	110.0	110.0
	54"	110.0	110.0	110.0	110.0	110.0	110.0	110.0
	60"	103.0	110.0	110.0	110.0	110.0	110.0	110.0
	68"	87.9	110.0	110.0	110.0	110.0	110.0	110.0
	79"	72.1	110.0	110.0	110.0	110.0	110.0	110.0
	82"	68.5	106.7	110.0	110.0	110.0	110.0	110.0
	95"	55.6	87.0	110.0	110.0	110.0	110.0	110.0
132"	36"	110.0	110.0	110.0	110.0	110.0	110.0	110.0
	42"	110.0	110.0	110.0	110.0	110.0	110.0	110.0
	48"	106.9	110.0	110.0	110.0	110.0	110.0	110.0
	54"	92.2	110.0	110.0	110.0	110.0	110.0	110.0
	60"	80.3	110.0	110.0	110.0	110.0	110.0	110.0
	68"	67.8	105.7	110.0	110.0	110.0	110.0	110.0
144"	79"	54.8	85.7	110.0	110.0	110.0	110.0	110.0
	36"	110.0	110.0	110.0	110.0	110.0	110.0	110.0
	42"	101.3	110.0	110.0	110.0	110.0	110.0	110.0
	48"	85.4	110.0	110.0	110.0	110.0	110.0	110.0
	54"	72.9	110.0	110.0	110.0	110.0	110.0	110.0
	60"	63.0	98.4	110.0	110.0	110.0	110.0	110.0
	68"	51.7	82.3	110.0	110.0	110.0	110.0	110.0
	79"		65.5	109.6	92.4	110.0	110.0	110.0
156"	30"	110.0	110.0	110.0	110.0	110.0	110.0	110.0
	36"	95.1	110.0	110.0	110.0	110.0	110.0	110.0
	42"	77.2	110.0	110.0	110.0	110.0	110.0	110.0
	48"	62.9	105.6	110.0	110.0	110.0	110.0	110.0
	54"	50.8	89.9	110.0	110.0	110.0	110.0	110.0
	60"		76.7	110.0	98.3	110.0	110.0	110.0
	68"		61.7	99.5	77.4	110.0	110.0	110.0
168"	30"	90.3	110.0	110.0	110.0	110.0	110.0	110.0
	36"	69.8	110.0	110.0	110.0	110.0	110.0	110.0
	42"	53.7	93.7	110.0	110.0	110.0	110.0	110.0
	48"	40.0	76.8	110.0	98.4	110.0	110.0	110.0
	54"		62.7	110.6	78.8	110.0	110.0	110.0
	60"		50.2	87.3	60.9	110.0	100.4	110.0
	68"			72.6		110.0	69.0	110.0
180"	24"	92.3	100.0	100.0	100.0	100.0	100.0	100.0
	30"	67.2	100.0	100.0	100.0	100.0	100.0	100.0
	36"	48.3	86.9	100.0	100.0	100.0	100.0	100.0
	42"		68.0	100.0	86.1	100.0	100.0	100.0
	48"		52.1	89.3	63.7	100.0	100.0	100.0
	54"					100.0	75.3	100.0
192"	60"				100.0	44.0	100.0	100.0
	24"	70.3	100.0	100.0	100.0	100.0	100.0	100.0
	30"	47.2	85.4	100.0	100.0	100.0	100.0	100.0
	36"		63.3	100.0	79.6	100.0	100.0	100.0
	42"		44.9	82.1	53.1	100.0	89.8	100.0
	48"			66.7		100.0	53.9	100.0
192"	54"			53.7		100.0	100.0	100.0
	60"			42.0		100.0		84.0



MULLION 'M1' NO REINF.			
Ix IN^4		Sx IN^3	
23.7783		6.435	
Iy IN^4		Sy IN^3	
5.5924		3.438	

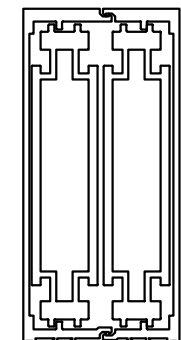
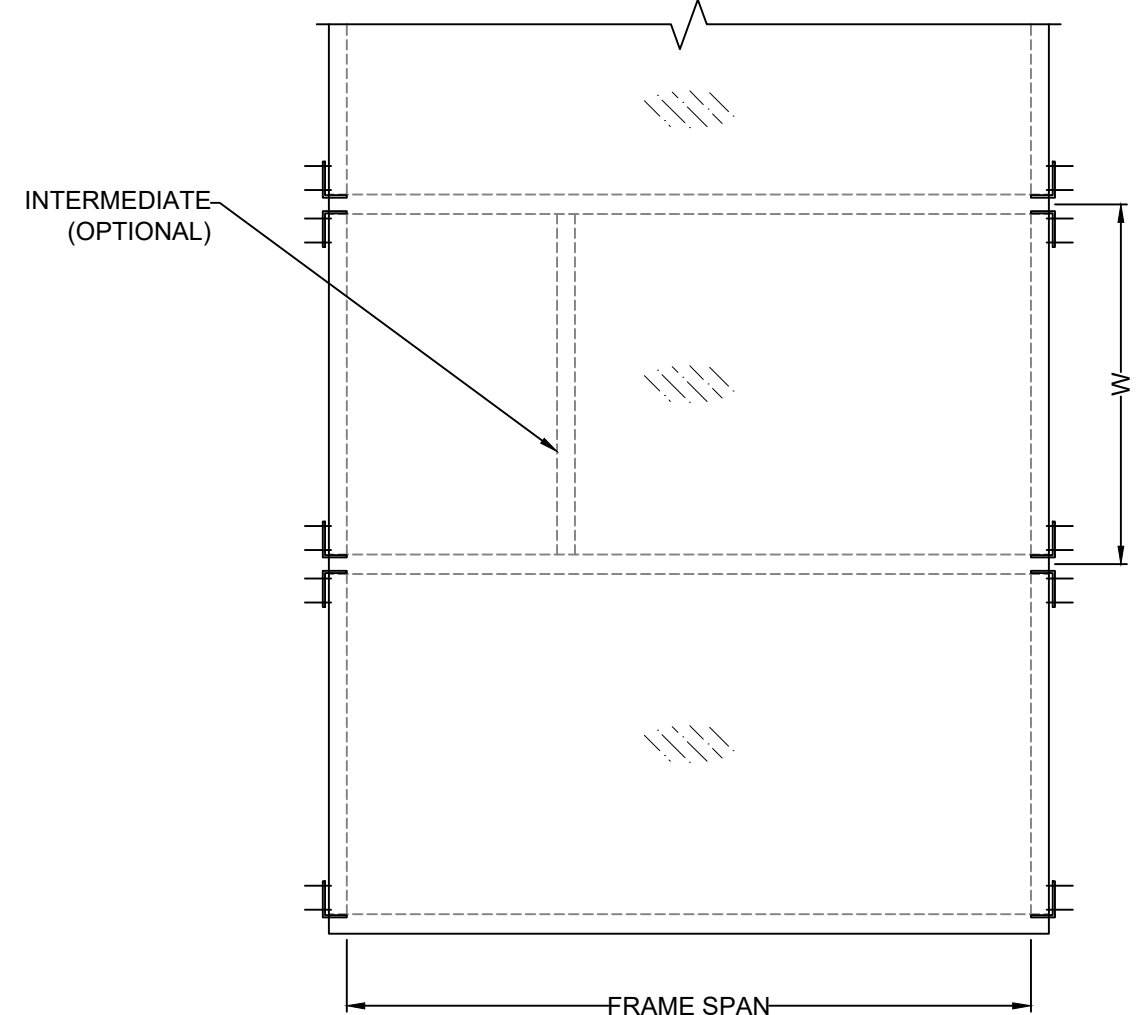


MULLION 'M2' & 'HJ1' ALUM. REINF.			
Ix IN^4		Sx IN^3	
35.5415		9.829	
Iy IN^4		Sy IN^3	
7.2218		3.629	

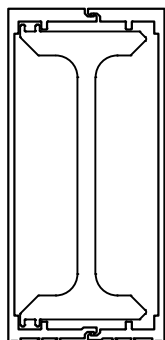


HEAD & SILL & INTERMEDIATE NO REINF.			
Ix IN^4		Sx IN^3	
22.7340		5.841	

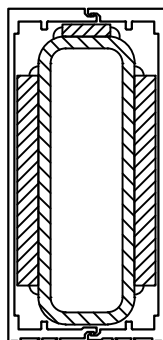
SPACE FOR COMPLIANCE NOTES



MULLION 'M3' & 'HJ2' ALUM. REINF.			
Ix IN^4		Sx IN^3	
47.2767		13.178	
Iy IN^4		Sy IN^3	
10.3455		6.318	



MULLION 'M4' ALUM. REINF.			
Ix IN^4		Sx IN^3	
47.2443		13.129	
Iy IN^4		Sy IN^3	
6.8228		4.130	



MULLION 'M5' STEEL REINF.			
ALUMINUM			
Ix IN^4		Sx IN^3	
23.7783		6.435	
Iy IN^4		Sy IN^3	
5.5924		3.438	
STEEL			
Ix IN^4		Sx IN^3	
22.0275		6.998	
Iy IN^4		Sy IN^3	
8.0495		5.600	

SPACE FOR APPROVER STAMP

FL#39158

**COMPANY INFO**  
Melchor Consultation Services, LLC.  
PHONE No.: 305-343-3622  
EMAIL: CARLOS@MELCHORCS.COM

**DRF / ENG**  
P.T. / C.M.  
YEAR  
FBC 2020  
**PRODUCT**  
OGT-700

**PRODUCT LINE DESCRIPTION**  
OGT - 700 WINDOW WALL SYSTEM  
LARGE MISSILE IMPACT

**MANUFACTURER**  
OGT WINDOW PRODUCTS, LLC  
6910 NW 42ND STREET  
MIAMI, FL 33166

REVISION		
#	DATE	COMMENT

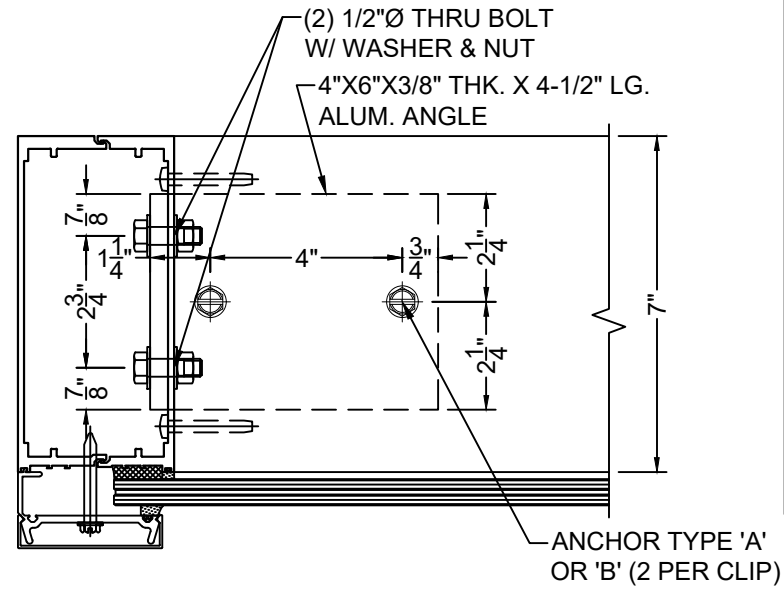
CARLOS MELCHOR  
FL P.E. # 81344  
C.A.N. # 32186  
DRAWINGS ARE VALID ONLY  
WITH A DIGITAL SIGNATURE

SEALED 06-15-21

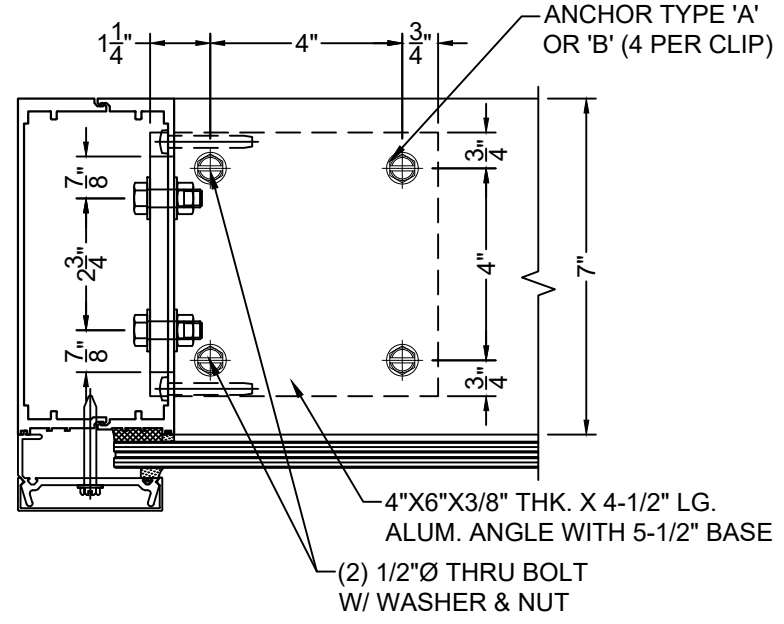
**DRAWING INFO**  
PAGE: C04

ANCHOR SELECTION CHART

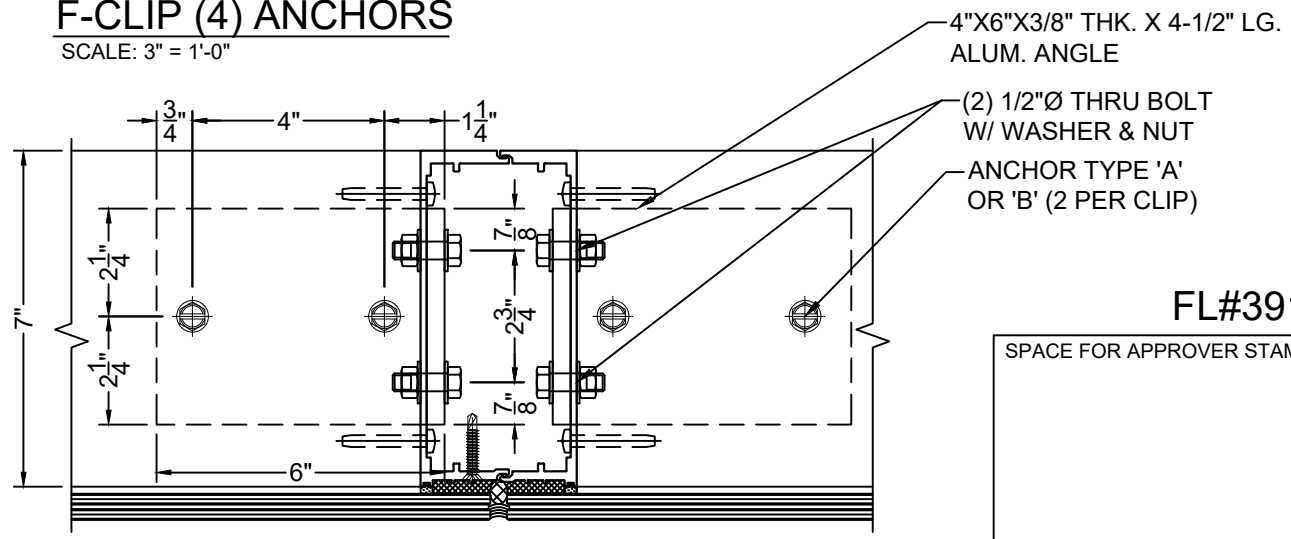
SPAN	SPACING	T-CLIP STEEL (PSF)	(2) ANCHOR F-CLIP STEEL (PSF)	(4) ANCHOR F-CLIP STEEL (PSF)	T-CLIP CONCRETE (PSF)	(2) ANCHOR F-CLIP CONCRETE (PSF)	(4) ANCHOR F-CLIP CONCRETE (PSF)
120"	48"	110.0	100.0	110.0	110.0	100.0	110.0
	54"	110.0	88.9	110.0	110.0	88.9	110.0
	60"	110.0	80.0	110.0	110.0	80.0	110.0
	68"	110.0	70.6	110.0	110.0	70.6	110.0
	79"	110.0	60.8	110.0	110.0	60.8	110.0
	82"	110.0	58.5	110.0	110.0	58.5	110.0
	95"	110.0	50.5	101.1	110.0	50.5	101.1
132"	36"	110.0	110.0	110.0	110.0	110.0	110.0
	42"	110.0	103.9	110.0	110.0	103.9	110.0
	48"	110.0	90.9	110.0	110.0	90.9	110.0
	54"	110.0	80.8	110.0	110.0	80.8	110.0
	60"	110.0	72.7	110.0	110.0	72.7	110.0
	68"	110.0	64.2	110.0	110.0	64.2	110.0
	79"	110.0	55.2	110.0	110.0	55.2	110.0
144"	36"	110.0	110.0	110.0	110.0	110.0	110.0
	42"	110.0	95.2	110.0	110.0	95.2	110.0
	48"	110.0	83.3	110.0	110.0	83.3	110.0
	54"	110.0	74.1	110.0	110.0	74.1	110.0
	60"	110.0	66.7	110.0	110.0	66.7	110.0
	68"	110.0	58.8	110.0	110.0	58.8	110.0
	79"	110.0	50.6	101.3	110.0	50.6	101.3
156"	30"	110.0	110.0	110.0	110.0	110.0	110.0
	36"	110.0	102.6	110.0	110.0	102.6	110.0
	42"	110.0	87.9	110.0	110.0	87.9	110.0
	48"	110.0	76.9	110.0	110.0	76.9	110.0
	54"	110.0	68.4	110.0	110.0	68.4	110.0
	60"	110.0	61.5	110.0	110.0	61.5	110.0
	68"	110.0	54.3	108.7	110.0	54.3	108.7
168"	36"	110.0	110.0	110.0	110.0	110.0	110.0
	42"	110.0	95.2	110.0	110.0	95.2	110.0
	48"	110.0	81.6	110.0	110.0	81.6	110.0
	54"	110.0	71.4	110.0	110.0	71.4	110.0
	60"	110.0	63.5	110.0	110.0	63.5	110.0
	68"	110.0	57.1	110.0	110.0	57.1	110.0
	79"	110.0	50.4	100.9	110.0	50.4	100.9
180"	24"	100.0	100.0	100.0	100.0	100.0	100.0
	30"	100.0	100.0	100.0	100.0	100.0	100.0
	36"	100.0	88.9	100.0	100.0	88.9	100.0
	42"	100.0	76.2	100.0	100.0	76.2	100.0
	48"	100.0	66.7	100.0	100.0	66.7	100.0
	54"	100.0	59.3	100.0	100.0	59.3	100.0
	60"	100.0	53.3	100.0	100.0	53.3	100.0
192"	24"	100.0	100.0	100.0	100.0	100.0	100.0
	30"	100.0	100.0	100.0	100.0	100.0	100.0
	36"	100.0	83.3	100.0	100.0	83.3	100.0
	42"	100.0	71.4	100.0	100.0	71.4	100.0
	48"	100.0	62.5	100.0	100.0	62.5	100.0
	60"	100.0	55.6	100.0	100.0	55.6	100.0
60"	100.0	50.0	100.0	100.0	50.0	100.0	



**F-CLIP (2) ANCHORS**  
SCALE: 3" = 1'-0"



**F-CLIP (4) ANCHORS**  
SCALE: 3" = 1'-0"



**T-CLIP**  
SCALE: 3" = 1'-0"

SPACE FOR COMPLIANCE NOTES

SPACE FOR APPROVER STAMP

**FL#39158**

**COMPANY INFO**  
Melchor Consultation Services, LLC.  
PHONE No.: 305-343-3622  
EMAIL: CARLOS@MELCHORCS.COM

**DRF / ENG**  
P.T. / C.M.  
YEAR  
FBC 2020  
PRODUCT  
OGT-700

**PRODUCT LINE DESCRIPTION**  
OGT - 700 WINDOW WALL SYSTEM  
LARGE MISSILE IMPACT

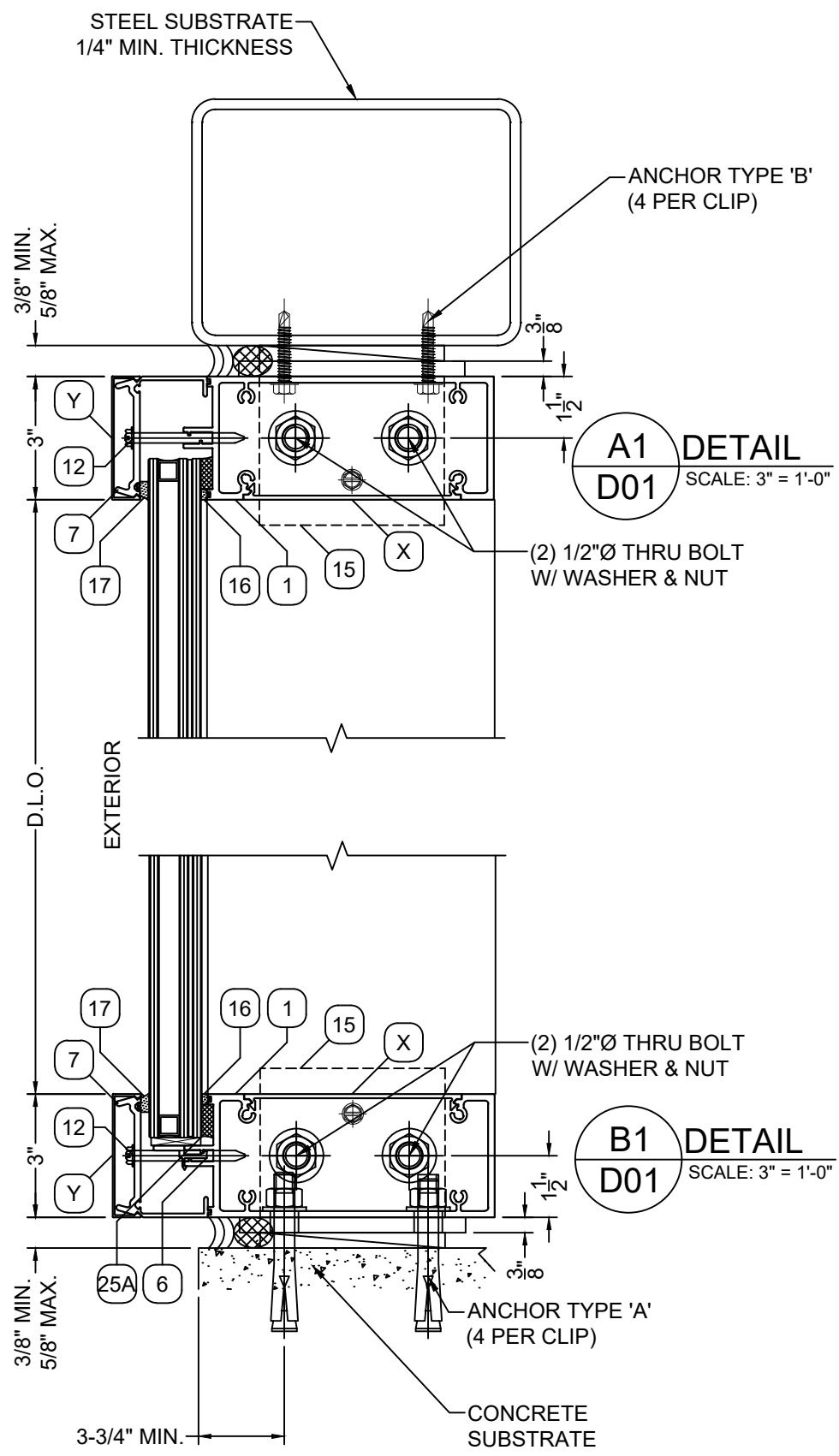
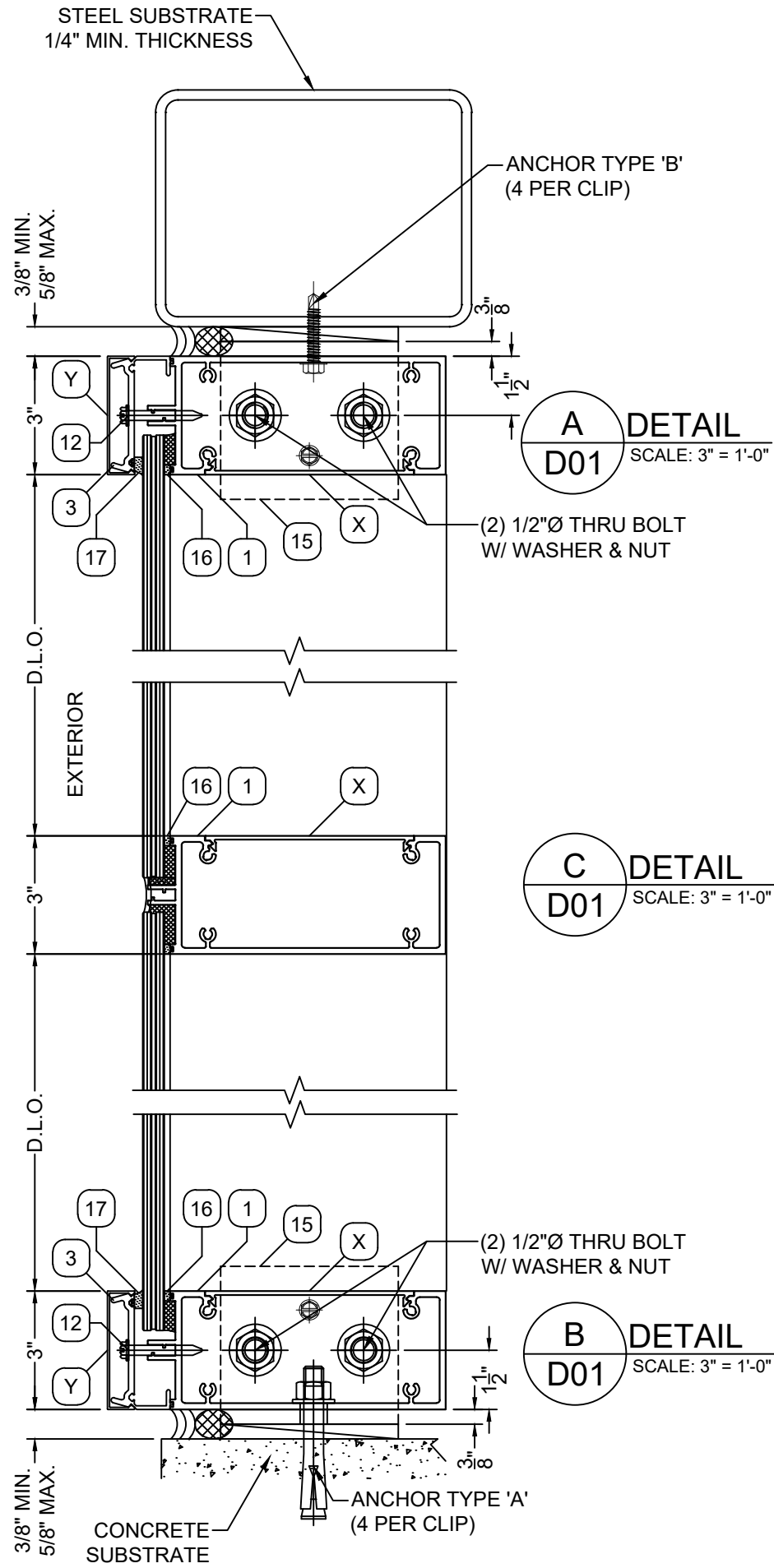
**MANUFACTURER**  
OGT WINDOW PRODUCTS, LLC  
6910 NW 42ND STREET  
MIAMI, FL 33166

REVISION #	DATE	COMMENT

CARLOS MELCHOR  
FL P.E. # 81344  
C.A.N. # 32186  
DRAWINGS ARE VALID ONLY WITH A DIGITAL SIGNATURE

SEALED 06-15-21

**DRAWING INFO**  
PAGE: C05



WOOD, CONCRETE AND METAL STRUCTURE NOT BY O.G.T. MUST SUSTAIN LOADS IMPOSED BY GLAZING SYSTEM AND TRANSFER THEM TO THE BUILDING STRUCTURE.

- ANCHORS THRU CLIP ANGLE:**
- TYPE 'A' - 1/2" DIA. KWIK BOLT 3 EXPANSION ANCHOR DIRECTLY INTO CONCRETE  
3-1/2" MIN. EMBED INTO CONCRETE  
3-3/4" MIN. EDGE DISTANCE  
3-3/4" MIN. CL TO CL SPACING
  - TYPE 'B' - 5/16" DIA. MACHINE SCREW (GR. 5) OR SMS INTO METAL STRUCTURES (STEEL 1/4" MIN. THK.)  
1" MIN. EDGE DISTANCE  
1 MIN. CL TO CL SPACING

**ANCHOR HEAD NOTES:**  
INSTALLER SHALL ENSURE THAT ANCHOR HEADS ARE CLEARLY VISIBLE FOR INSPECTION. FLAT AND/OR HEX HEADS ARE ALLOWED/INTER CHANGEABLE.


**SEALANTS:**  
ALL FRAME CORNERS, JOINTS, MULLION SEAMS AND PERIMETER OF GLAZING BEAD TO FRAME SEALED WITH DOW CORNING 795 OR GE2000 SEALANT.

SPACE FOR COMPLIANCE NOTES

SPACE FOR APPROVER STAMP

FL#39158

**COMPANY INFO**  
Melchor Consultation Services, LLC.  
PHONE No.: 305-343-3622  
EMAIL: CARLOS@MELCHORCS.COM



<b>DRF / ENG</b>	<b>P.T. / C.M.</b>
<b>YEAR</b>	<b>PRODUCT</b>
FBC 2020	OGT-700

**PRODUCT LINE DESCRIPTION**  
OGT - 700 WINDOW WALL SYSTEM  
LARGE MISSILE IMPACT

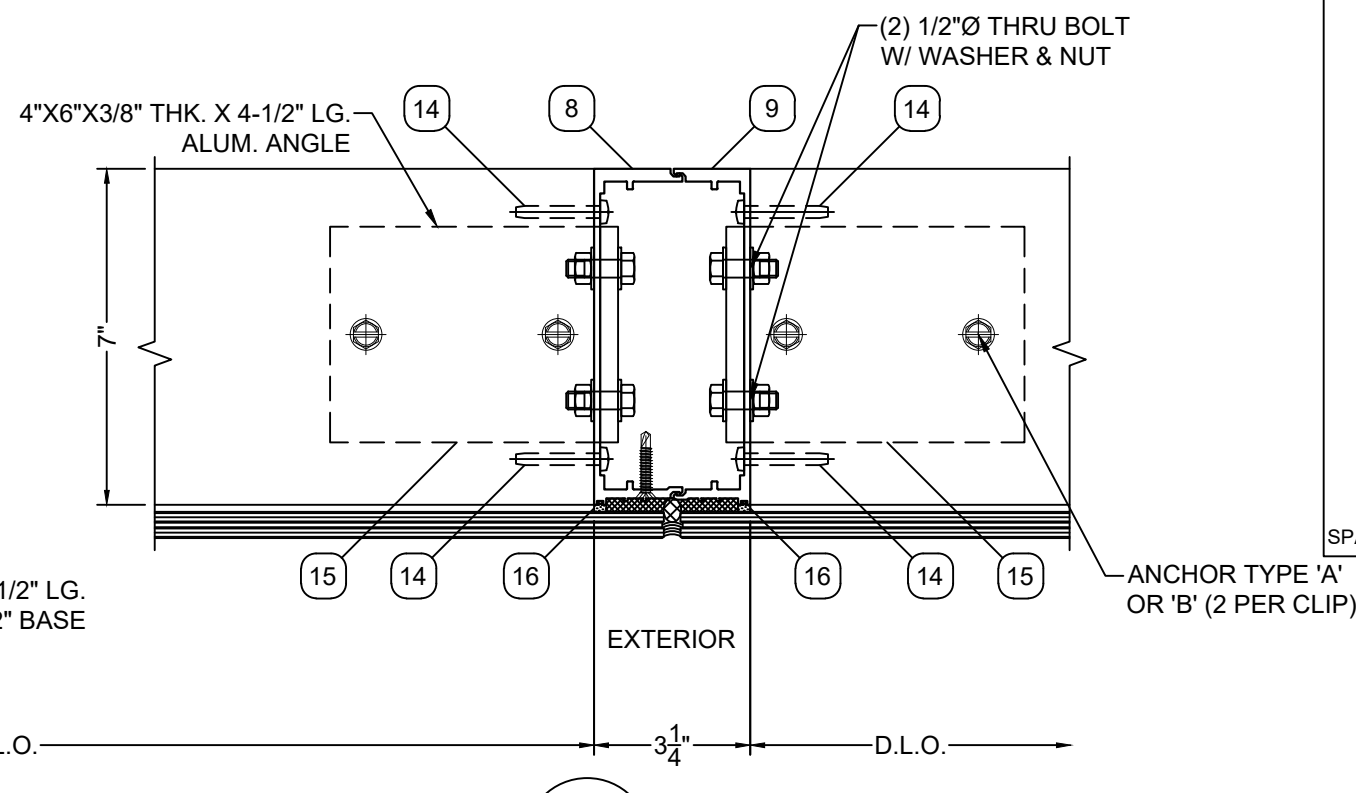
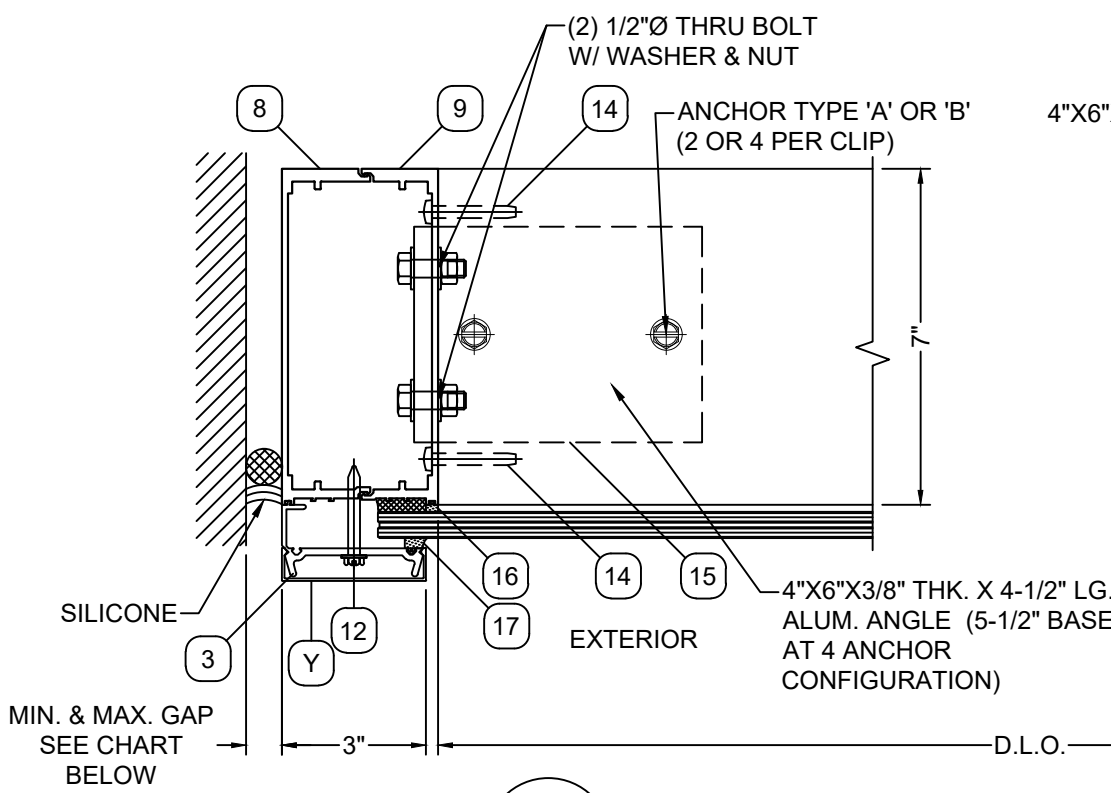
**MANUFACTURER**  
OGT WINDOW PRODUCTS, LLC  
6910 NW 42ND STREET  
MIAMI, FL 33166

REVISION #	DATE	COMMENT

CARLOS MELCHOR  
FL P.E. # 81344  
C.A.N. # 32186  
DRAWINGS ARE VALID ONLY WITH A DIGITAL SIGNATURE

SEALD 06-15-21

**DRAWING INFO**  
PAGE: D01



SPACE FOR COMPLIANCE NOTES

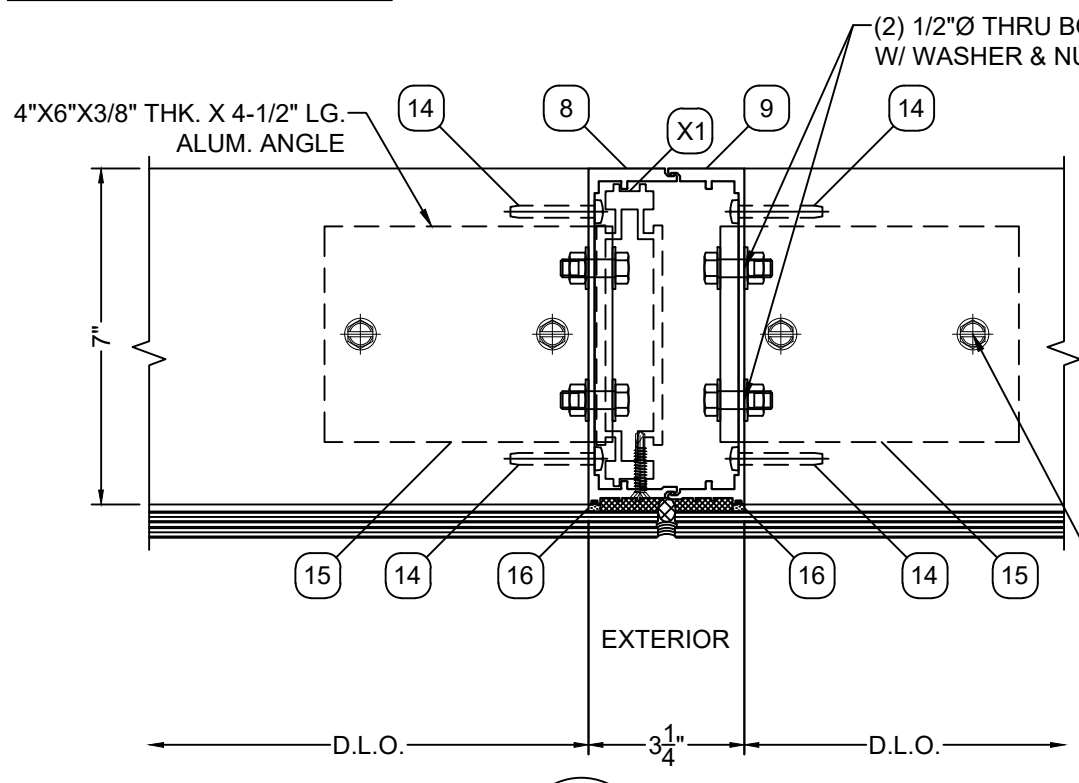
**C** DETAIL  
D02 SCALE: 3" = 1'-0"

JAMB 'J1'  
WITHOUT REINFORCEMENT

**D** DETAIL  
D02 SCALE: 3" = 1'-0"

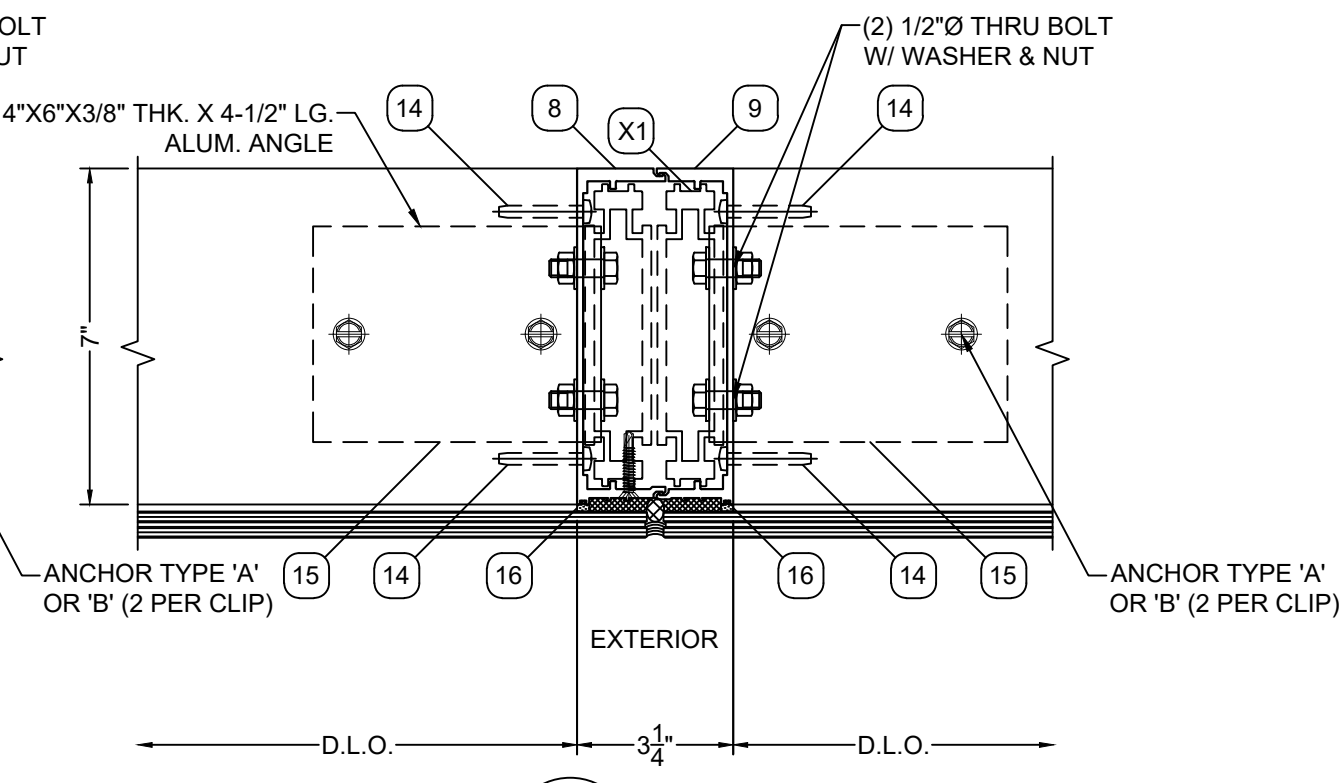
INTERMEDIATE VERTICAL MULLION 'M1'  
WITHOUT REINFORCEMENT

MAX. FRAME HEIGHT	MIN. GAP	MAX. GAP
168" +	3/4"	1"
144"	5/8"	1"
120"	1/2"	1"
96"	1/2"	1"



**D1** DETAIL  
D02 SCALE: 3" = 1'-0"

INTERMEDIATE VERTICAL MULLION 'M2'  
WITH ALUMINUM REINFORCEMENT



**D2** DETAIL  
D02 SCALE: 3" = 1'-0"

INTERMEDIATE VERTICAL MULLION 'M3'  
WITH ALUMINUM REINFORCEMENT

SPACE FOR APPROVER STAMP

FL#39158

**COMPANY INFO**  
Melchor Consultation Services, LLC.  
PHONE No.: 305-343-3622  
EMAIL: CARLOS@MELCHORCS.COM

**DRF / ENG**  
P.T. / C.M.  
**YEAR**  
FBC 2020  
**PRODUCT**  
OGT-700

**PRODUCT LINE DESCRIPTION**  
OGT - 700 WINDOW WALL SYSTEM  
LARGE MISSILE IMPACT

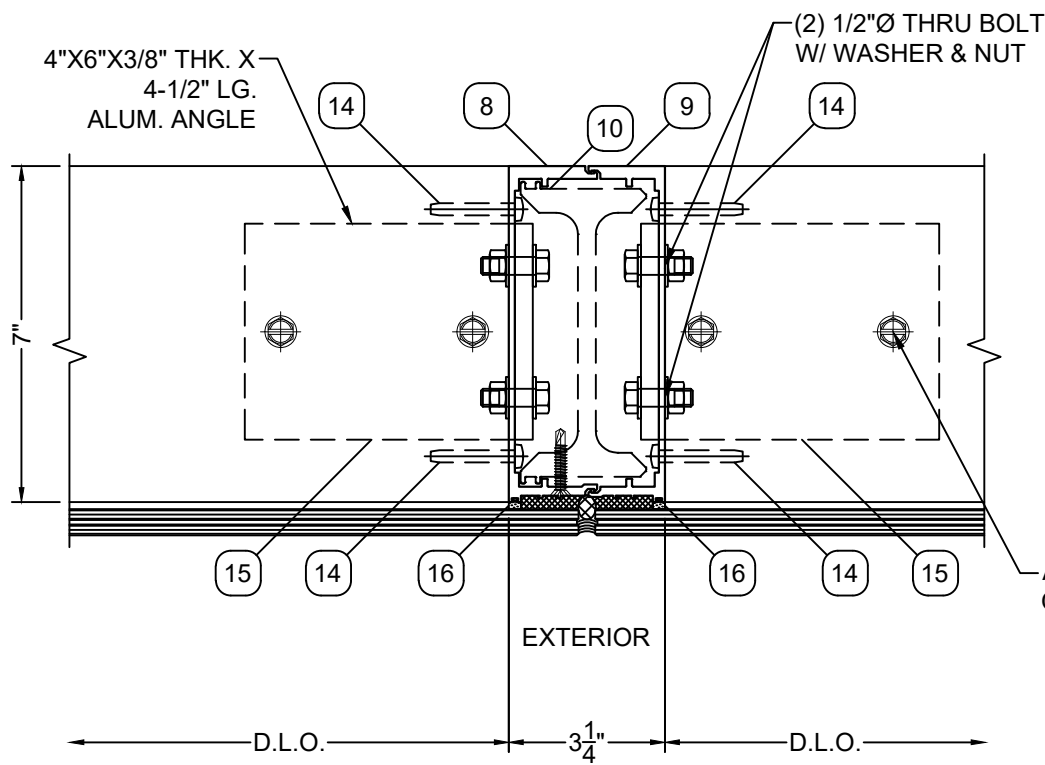
**MANUFACTURER**  
OGT WINDOW PRODUCTS, LLC  
6910 NW 42ND STREET  
MIAMI, FL 33166

REVISION #	DATE	COMMENT

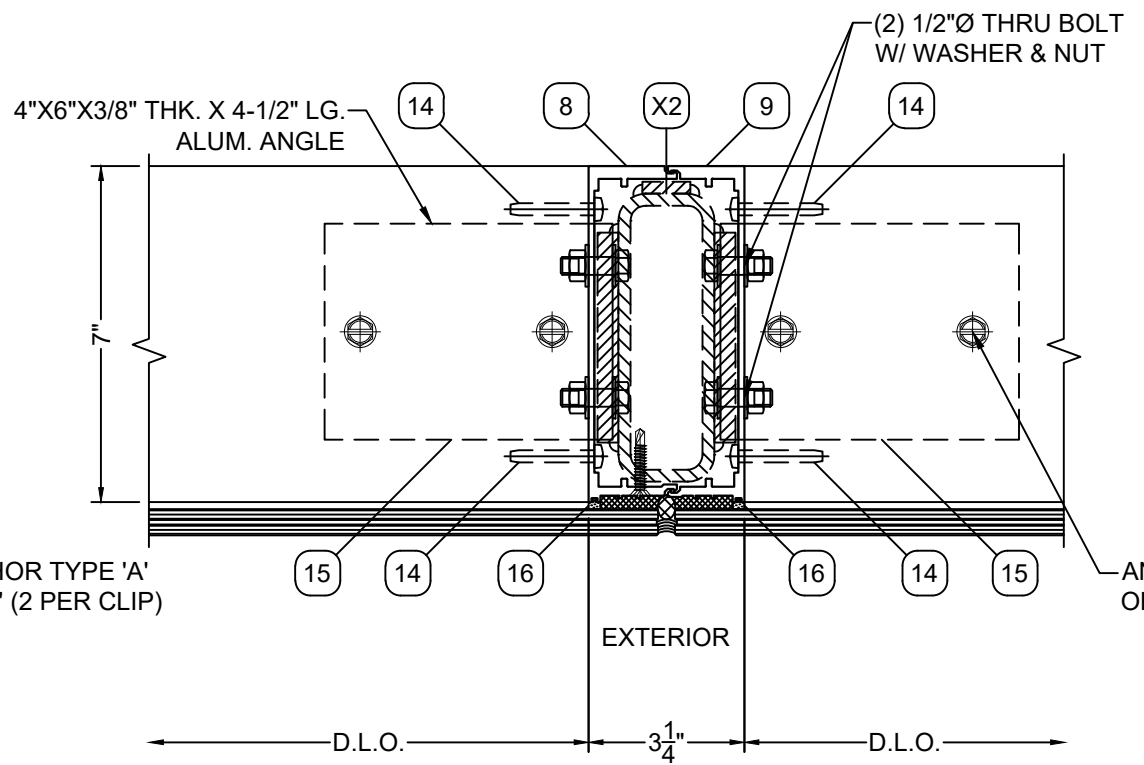
CARLOS MELCHOR  
FL P.E. # 81344  
C.A.N. # 32186  
DRAWINGS ARE VALID ONLY WITH A DIGITAL SIGNATURE

SEALED 06-15-21

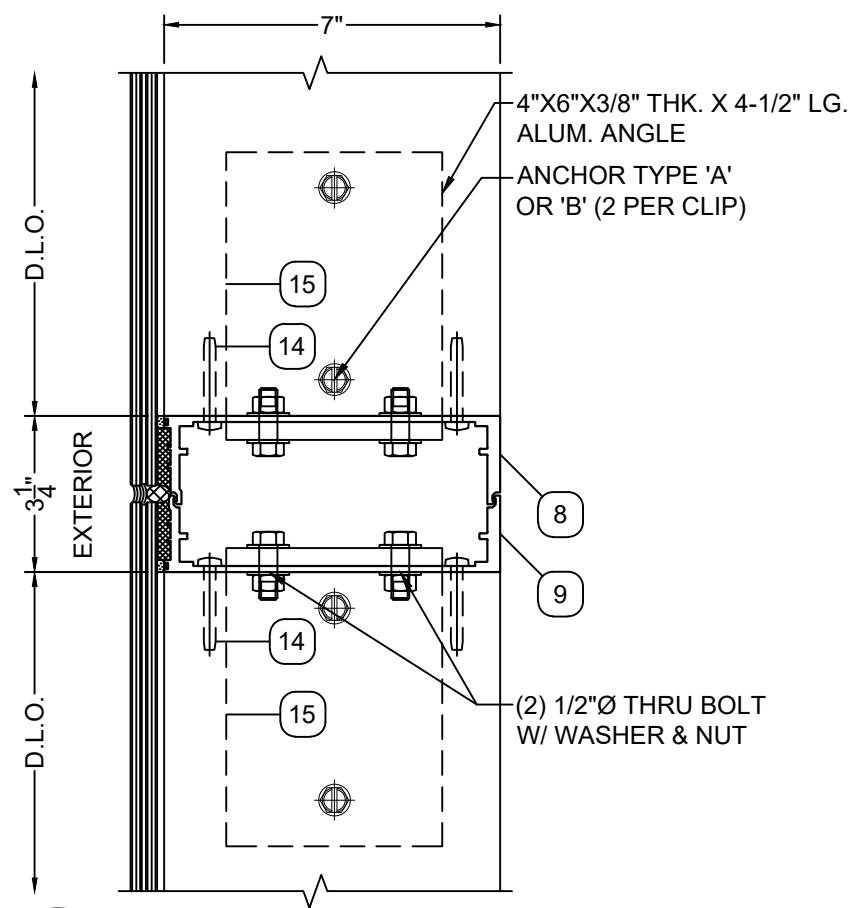
**DRAWING INFO**  
PAGE: D02



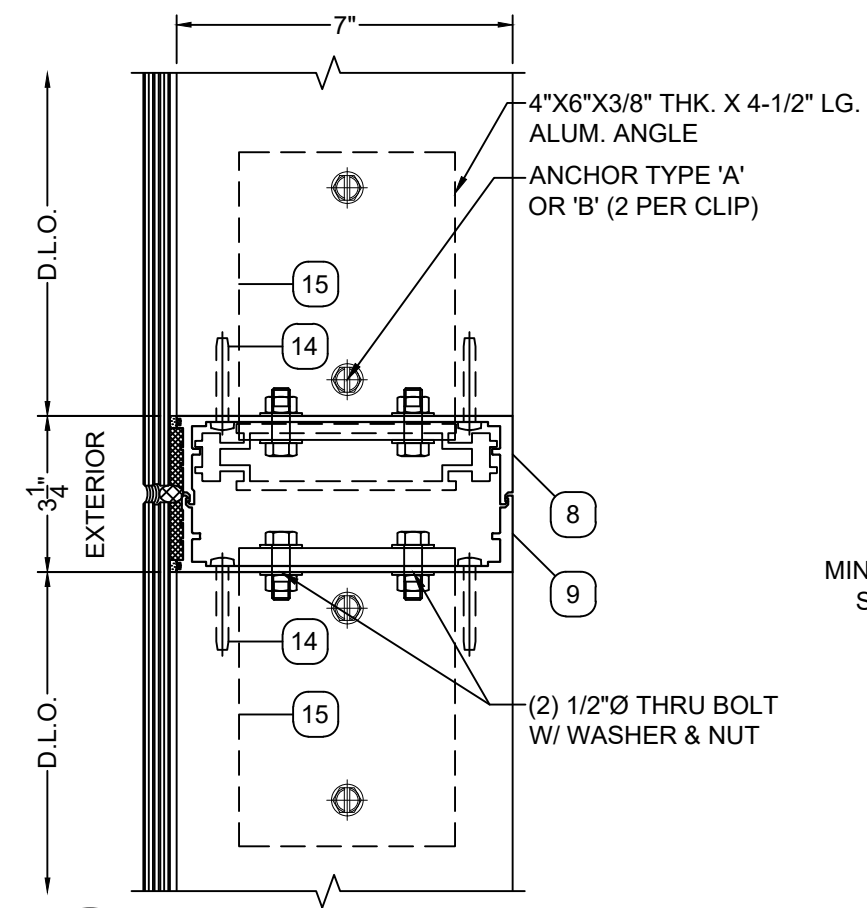
**D3** **DETAIL**  
**D03** SCALE: 3" = 1'-0"  
INTERMEDIATE VERTICAL MULLION 'M4' WITH ALUMINUM REINFORCEMENT



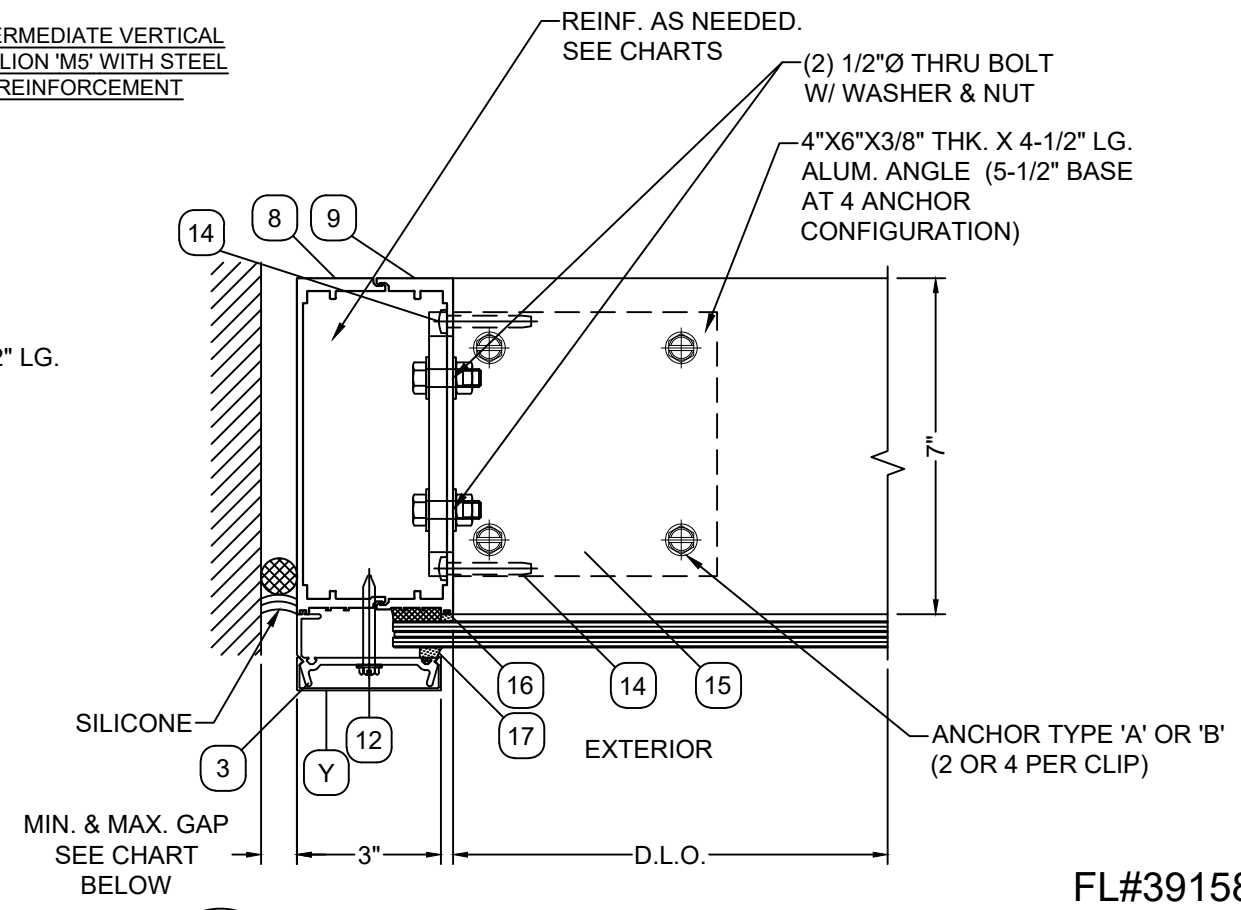
**D4** **DETAIL**  
**D03** SCALE: 3" = 1'-0"  
INTERMEDIATE VERTICAL MULLION 'M5' WITH STEEL REINFORCEMENT



**E** **DETAIL**  
**D03** SCALE: 3" = 1'-0"  
INTERMEDIATE HORIZONTAL MULLION 'M1' WITHOUT REINFORCEMENT



**E1** **DETAIL**  
**D03** SCALE: 3" = 1'-0"  
INTERMEDIATE HORIZONTAL MULLION 'M2' WITH ALUMINUM REINFORCEMENT



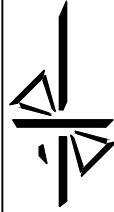
**C1** **DETAIL**  
**D03** SCALE: 3" = 1'-0"

SPACE FOR COMPLIANCE NOTES

SPACE FOR APPROVER STAMP

FL#39158

**COMPANY INFO**  
Melchor Consultation Services, LLC.  
PHONE No.: 305-343-3622  
EMAIL: CARLOS@MELCHORCS.COM



<b>DRF / ENG</b>	<b>P.T. / C.M.</b>
<b>YEAR</b>	<b>PRODUCT</b>
FBC 2020	OGT-700

**PRODUCT LINE DESCRIPTION**  
OGT - 700 WINDOW WALL SYSTEM  
LARGE MISSILE IMPACT

**MANUFACTURER**  
OGT WINDOW PRODUCTS, LLC  
6910 NW 42ND STREET  
MIAMI, FL 33166

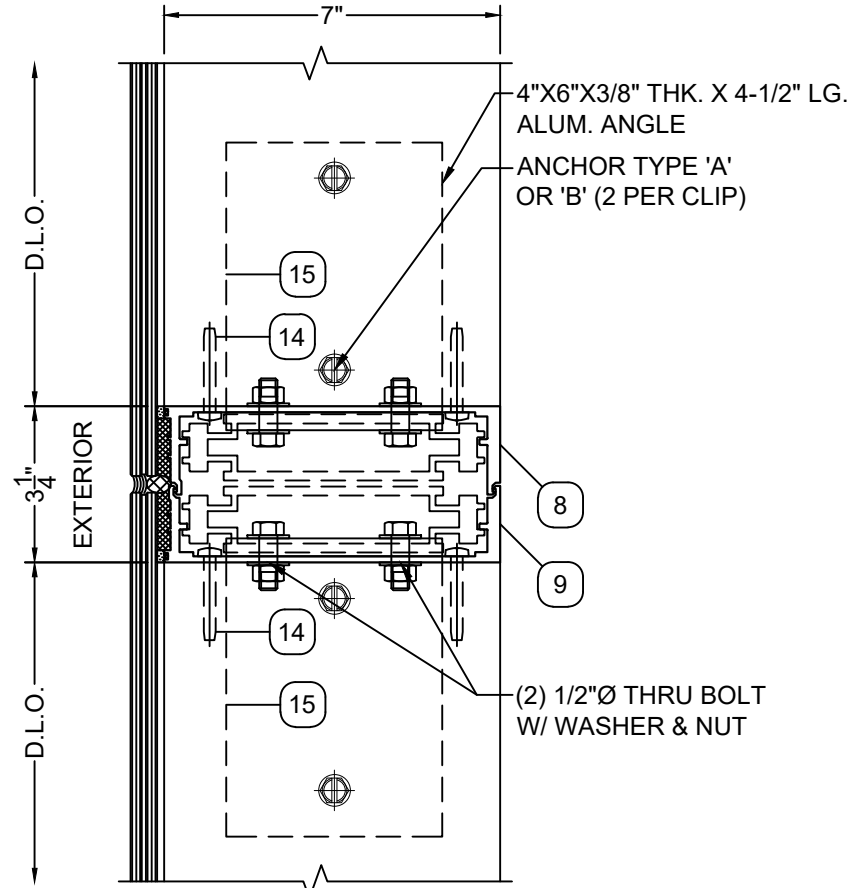
REVISION #	DATE	COMMENT

CARLOS MELCHOR  
FL P.E. # 81344  
C.A.N. # 32186  
DRAWINGS ARE VALID ONLY WITH A DIGITAL SIGNATURE

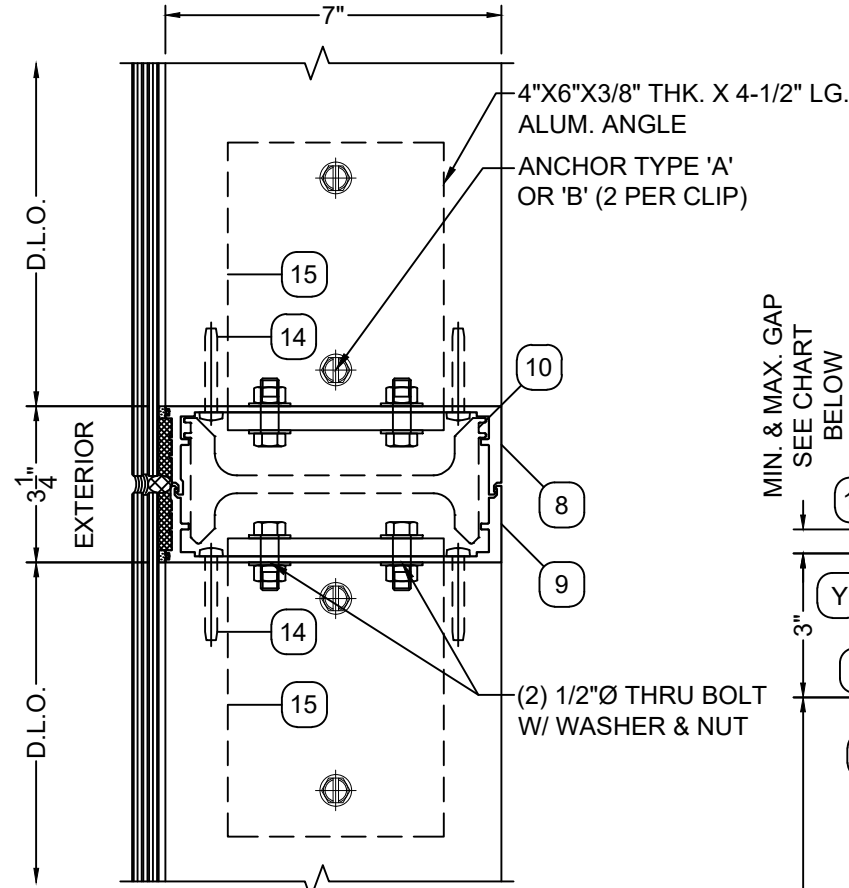
SEALED 06-15-21

**DRAWING INFO**  
PAGE: D03

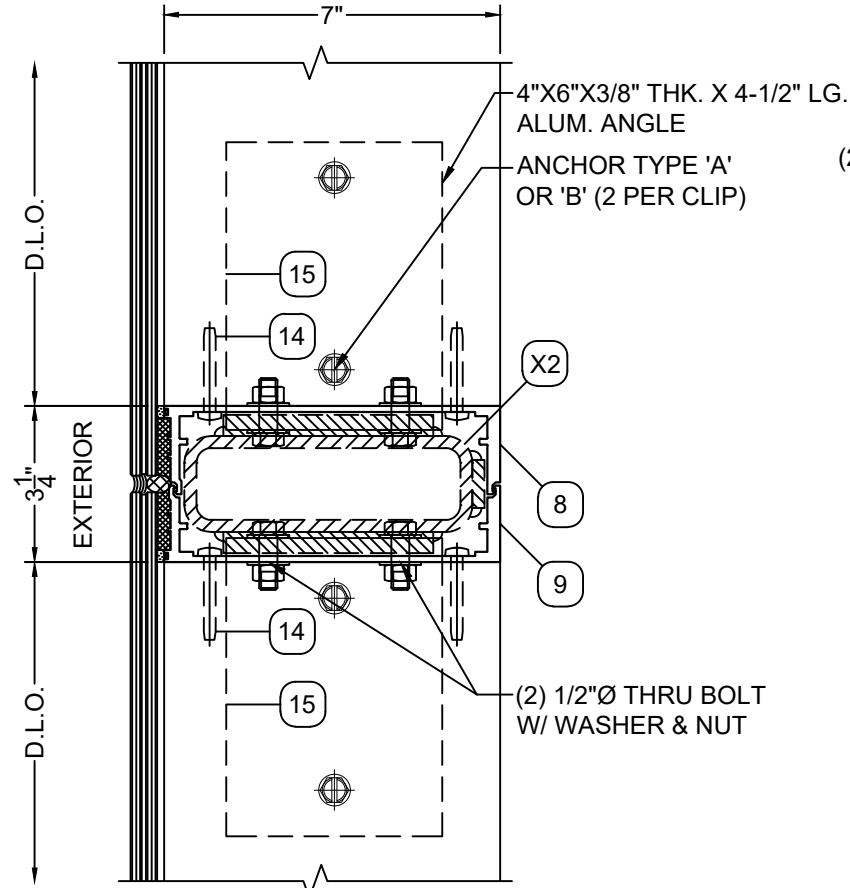




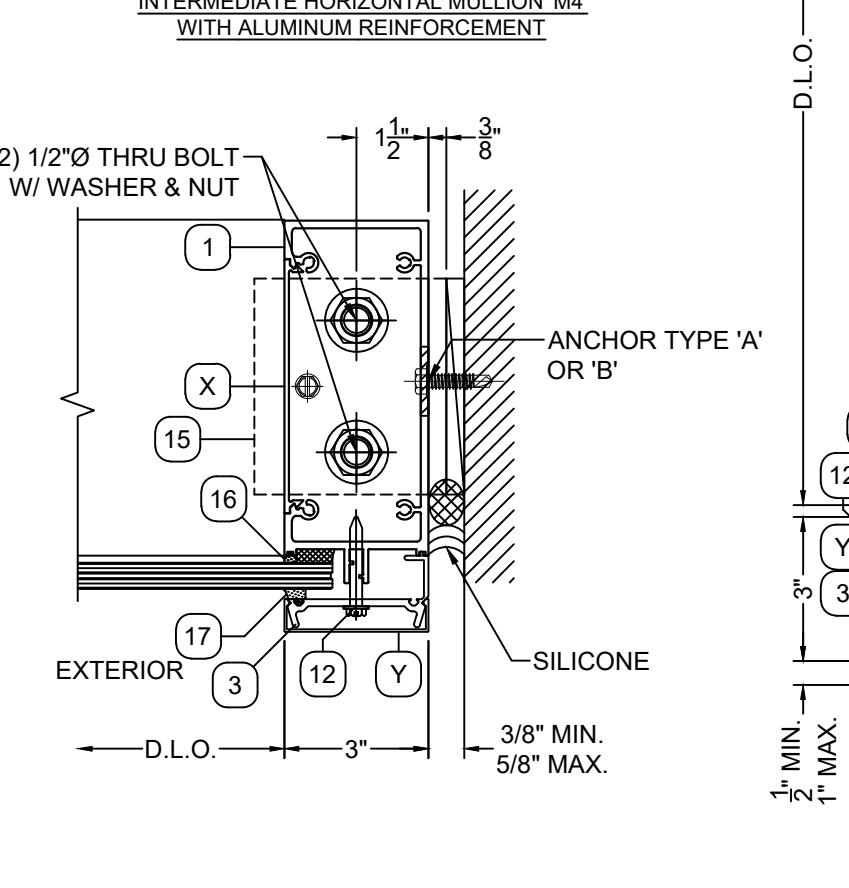
**E2** **DETAIL**  
**D04** SCALE: 3" = 1'-0"  
INTERMEDIATE HORIZONTAL MULLION 'M3'  
WITH ALUMINUM REINFORCEMENT



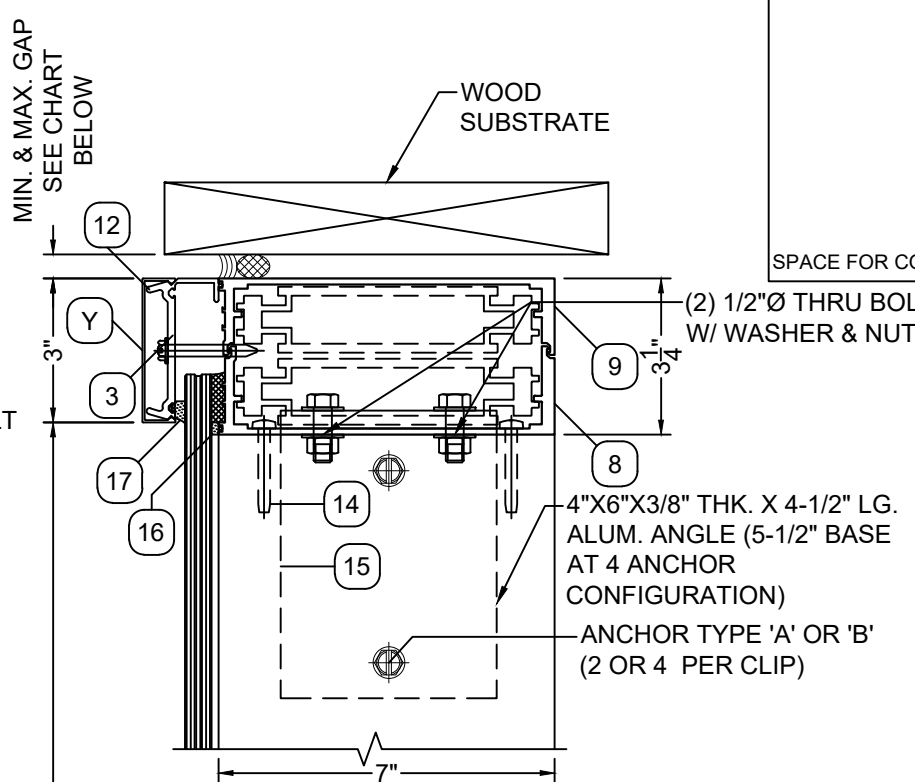
**E3** **DETAIL**  
**D04** SCALE: 3" = 1'-0"  
INTERMEDIATE HORIZONTAL MULLION 'M4'  
WITH ALUMINUM REINFORCEMENT



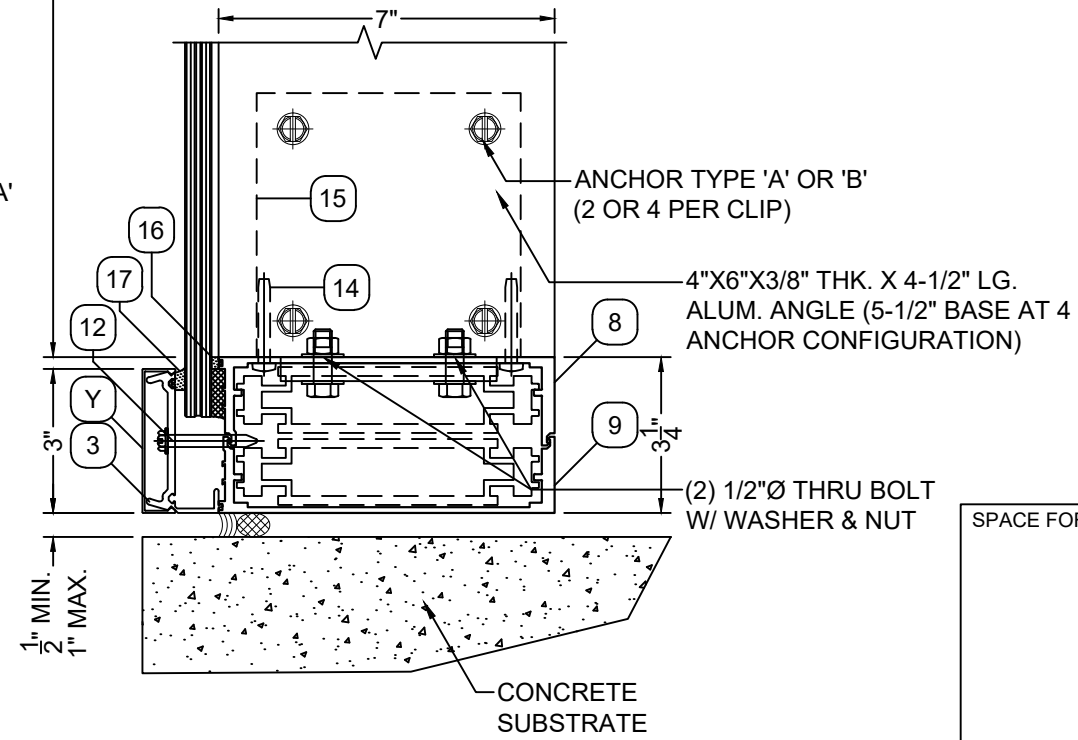
**E4** **DETAIL**  
**D04** SCALE: 3" = 1'-0"  
INTERMEDIATE HORIZONTAL MULLION 'M5'  
WITH STEEL REINFORCEMENT



**F** **DETAIL**  
**D04** SCALE: 3" = 1'-0"  
INTERMEDIATE HORIZONTAL MULLION 'M4'  
WITH ALUMINUM REINFORCEMENT



**G** **DETAIL**  
**D04** SCALE: 3" = 1'-0"  
INTERMEDIATE HORIZONTAL MULLION 'M4'  
WITH ALUMINUM REINFORCEMENT



**H** **DETAIL**  
**D04** SCALE: 3" = 1'-0"  
INTERMEDIATE HORIZONTAL MULLION 'M4'  
WITH ALUMINUM REINFORCEMENT

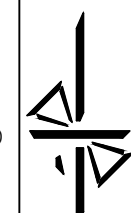
MAX. FRAME HEIGHT	MIN. GAP	MAX. GAP
168" +	3/4"	1"
144"	5/8"	1"
120"	1/2"	1"
96"	1/2"	1"

SPACE FOR COMPLIANCE NOTES

SPACE FOR APPROVER STAMP

**FL#39158**

**COMPANY INFO**  
Melchor Consultation Services, LLC.  
PHONE No.: 305-343-3622  
EMAIL: CARLOS@MELCHORCS.COM



**DRF / ENG**  
P.T. / C.M.  
**YEAR**  
FBC 2020  
**PRODUCT**  
OGT-700

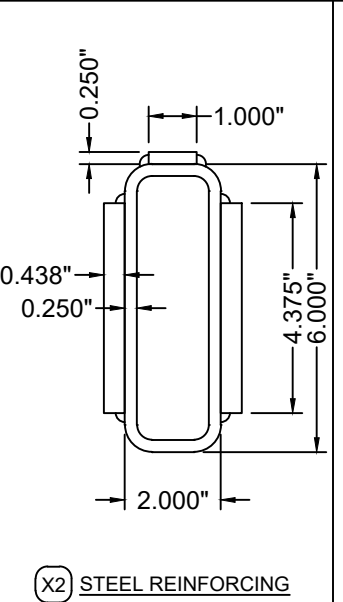
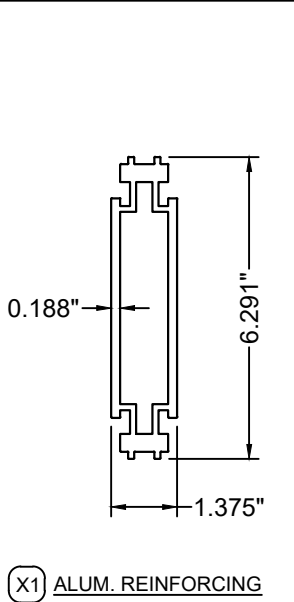
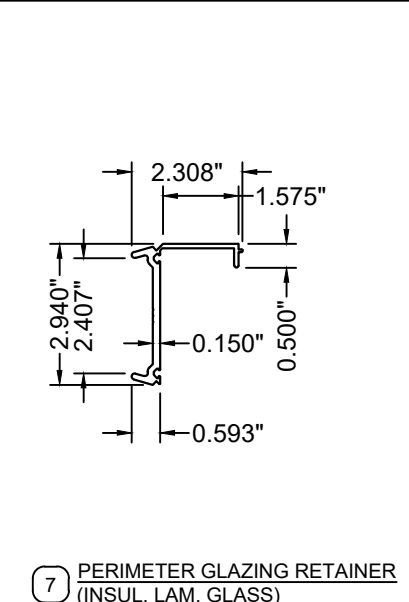
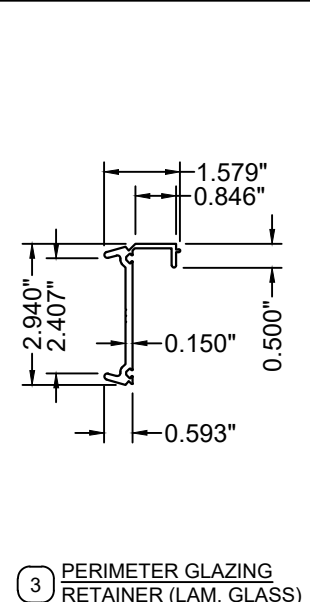
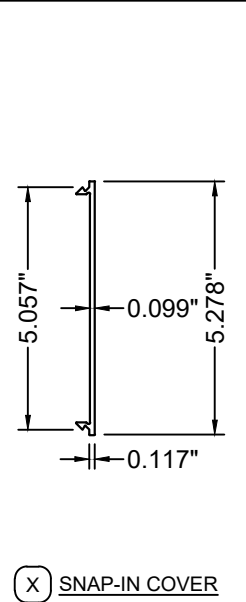
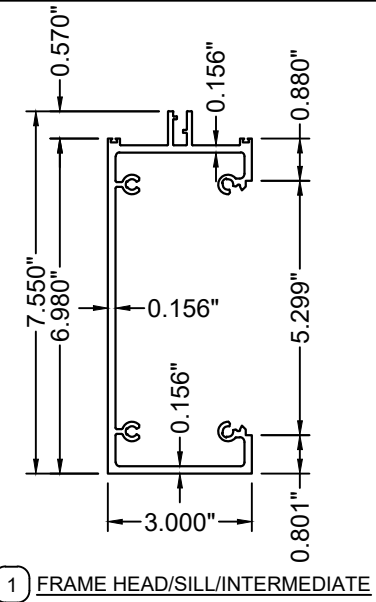
**PRODUCT LINE DESCRIPTION**  
OGT - 700 WINDOW WALL SYSTEM  
LARGE MISSILE IMPACT

**MANUFACTURER**  
OGT WINDOW PRODUCTS, LLC  
6910 NW 42ND STREET  
MIAMI, FL 33166

REVISION #	DATE	COMMENT

CARLOS MELCHOR  
FL P.E. # 81344  
C.A.N. # 32186  
DRAWINGS ARE VALID ONLY WITH A DIGITAL SIGNATURE

SEALED 06-15-21  
**DRAWING INFO**  
PAGE: D04



1 FRAME HEAD/SILL/INTERMEDIATE

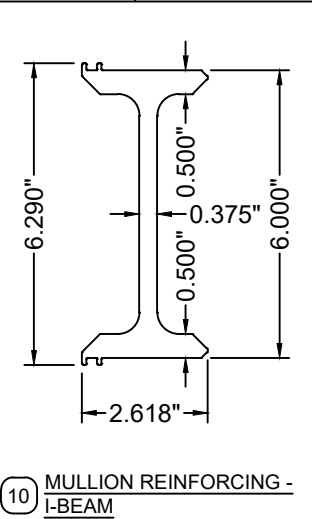
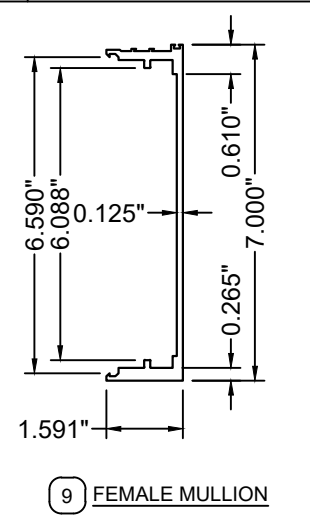
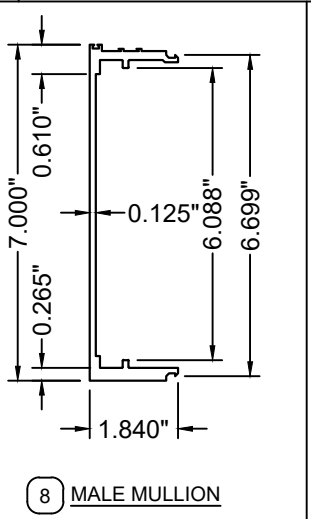
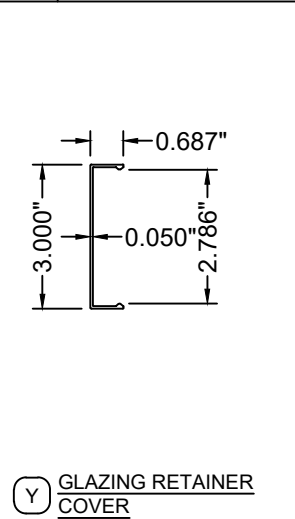
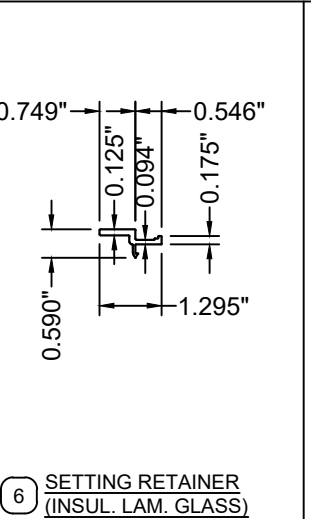
X SNAP-IN COVER

3 PERIMETER GLAZING RETAINER (LAM. GLASS)

7 PERIMETER GLAZING RETAINER (INSUL. LAM. GLASS)

X1 ALUM. REINFORCING

X2 STEEL REINFORCING



- 16 INT. GLAZING GASKET
- 17 EXT. GLAZING GASKET

6 SETTING RETAINER (INSUL. LAM. GLASS)

Y GLAZING RETAINER COVER

8 MALE MULLION

9 FEMALE MULLION

10 MULLION REINFORCING - I-BEAM

SPACE FOR COMPLIANCE NOTES

**COMPANY INFO**  
 Melchor Consultation Services, LLC.  
 PHONE No.: 305-343-3622  
 EMAIL: CARLOS@MELCHORCS.COM

**DRF / ENG**  
 P.T. / C.M.  
 YEAR  
 FBC 2020  
 PRODUCT  
 OGT-700

**PRODUCT LINE DESCRIPTION**  
 OGT - 700 WINDOW WALL SYSTEM  
 LARGE MISSILE IMPACT

**MANUFACTURER**  
 OGT WINDOW PRODUCTS, LLC  
 6910 NW 42ND STREET  
 MIAMI, FL 33166

REVISION	
#	DATE

CARLOS MELCHOR  
 FL P.E. # 81344  
 C.A.N. # 32186  
 DRAWINGS ARE VALID ONLY  
 WITH A DIGITAL SIGNATURE

**DRAWING INFO**  
 PAGE: BOM01

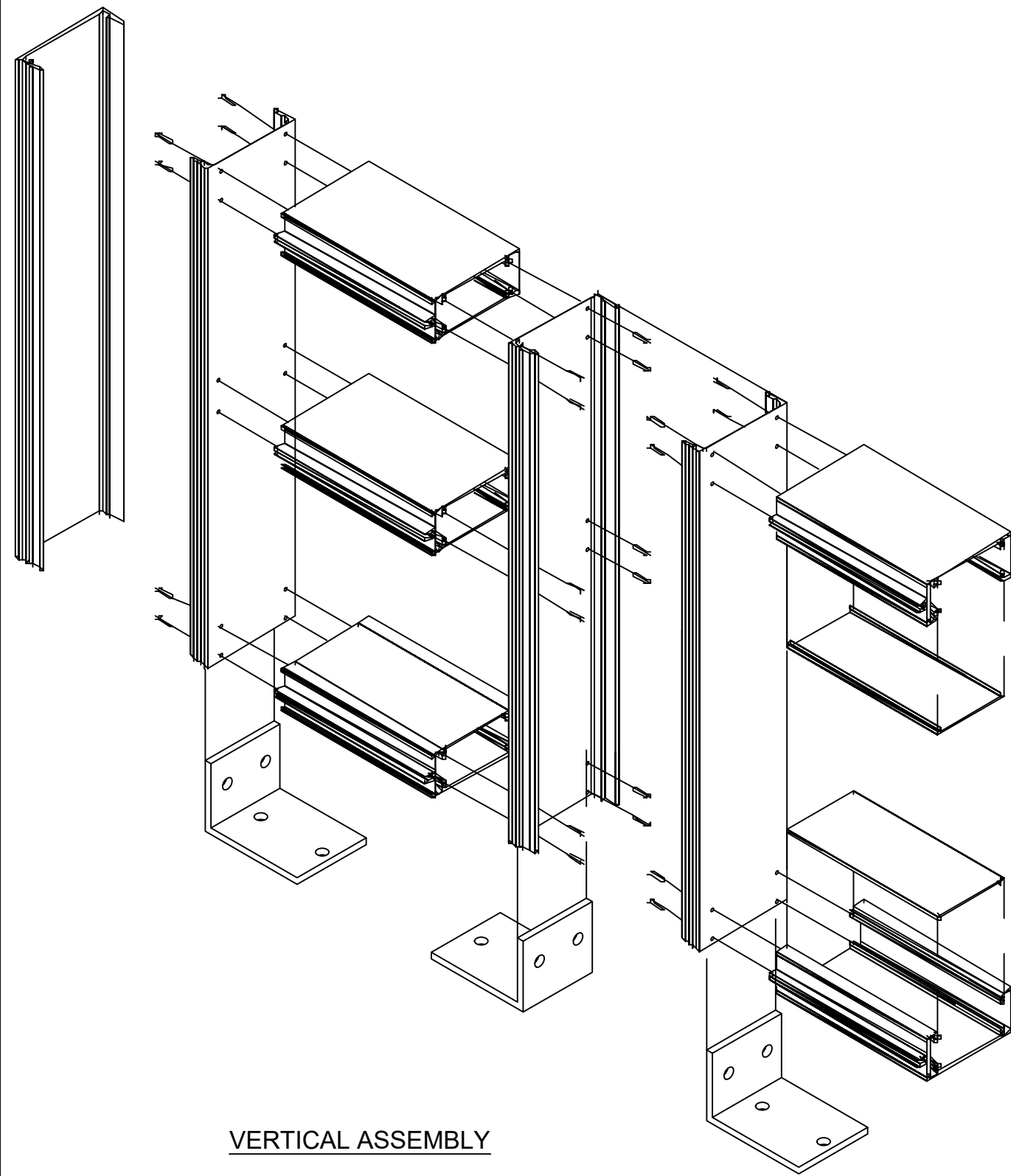
**BILL OF MATERIALS**

ITEM NO.	PART NUMBER	QUANTITY	DESCRIPTION	MATERIAL	MANF./SUPPLIER/REMARKS
1	OGT-701	AS REQD.	FRAME HEAD/SILL/INTERMEDIATE	6063-T6	-
X			SNAP-IN COVER	6063-T6	
Y			GLAZING RETAINER COVER	6063-T6	
3	OGT-3	AS REQD.	PERIMETER GLAZING RETAINER (LAM. GLASS)	6063-T6	-
6	OGT-706	AS REQD.	SETTING RETAINER (INSUL. LAM. GLASS)	6063-T6	6" LONG
7	OGT-9		PERIMETER GLAZING RETAINER (INSUL. LAM. GLASS)	6063-T6	-
8	OGT-703	AS REQD.	MALE MULLION	6063-T6	-
9	OGT-702	AS REQD.	FEMALE MULLION	6063-T6	-
10	OGT-709	AS REQD.	MULLION REINFORCING - I-BEAM	6063-T6	-
12	1/4" DIA.	AS REQD.	GLAZING RETAINER SCREWS	-	WASHER HEAD TEKS, AT 12" O.C.
14	1/4X2"	4/CORNER	FRAME ASSEMBLY SCREWS	ST. STEEL	HH TEKS
15	-	2/MULLION	3-1/2X6X3/8" ALUM ANGLE, 4-1/2" LONG	6061-T6	(1) AT EACH SIDE OF MULLION
16	WE-1641	-	INT. GLAZING GASKET	PVC	UNIVERSAL RUBBER CO.
17	2338.0000	-	EXT. GLAZING GASKET	PVC	UNIVERSAL RUBBER CO.
20	GE-SCS2003/DOW 995	AS REQD.	GLAZING COMPOUND	SILICONE	GENERAL ELECTRIC / DOW CORNING
25A	-	AS REQD.	SETTING BLOCK, 1-1/2"X6"X1/4" (INSUL. LAM. GLASS)	NEOPRENE	DUROMETER 80+/-5 SHORE A
26A	-	AS REQD.	SETTING BLOCK, 1-1/2"X4"X1/4" (LAM. GLASS)	NEOPRENE	DUROMETER 80+/-5 SHORE A
X1			ALUMINUM REINFORCING	6063-T6	
X2			STEEL REINFORCING	STEEL	

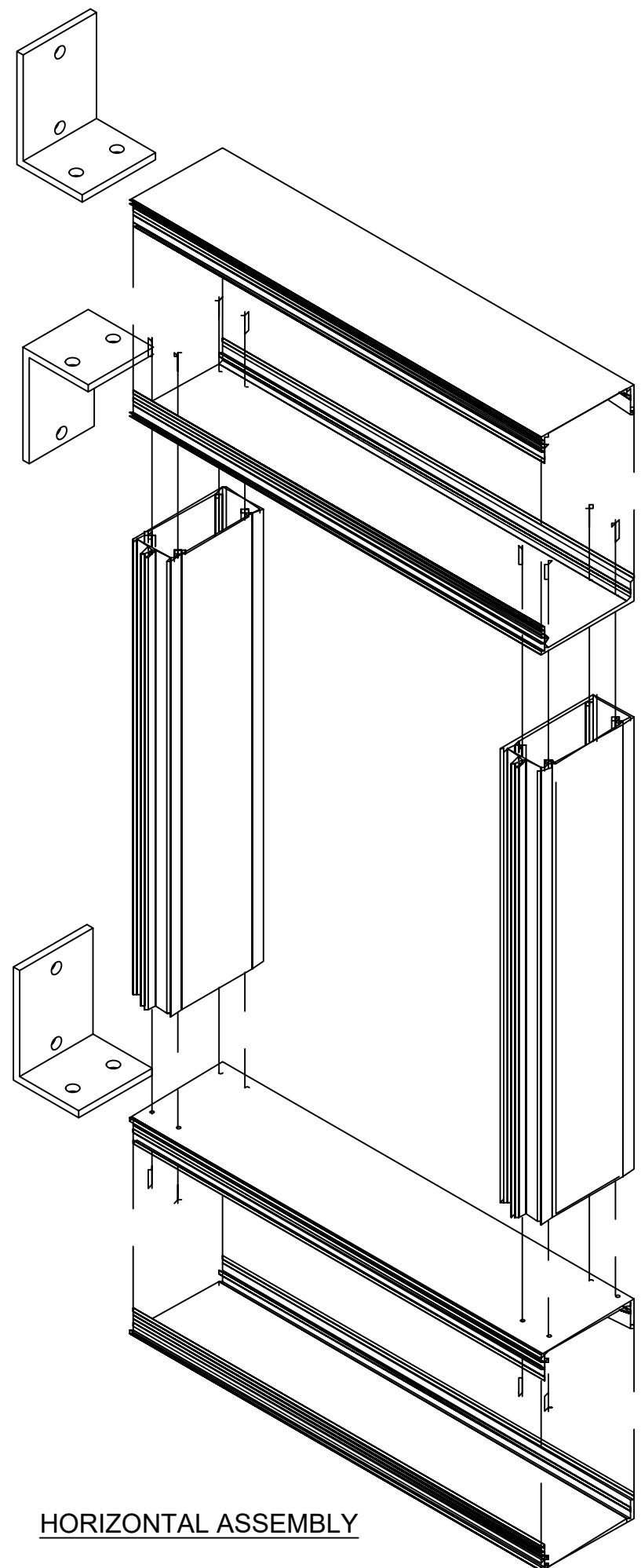
**FL#39158**

SPACE FOR APPROVER STAMP

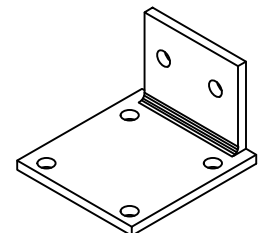
SEALED 06-15-21



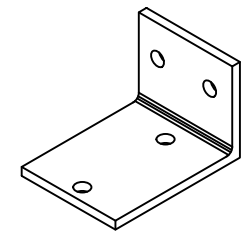
VERTICAL ASSEMBLY



HORIZONTAL ASSEMBLY



(4) ANCHOR F-CLIP



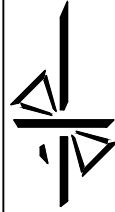
TYPICAL CLIP &  
(2) ANCHOR F-CLIP

SPACE FOR COMPLIANCE NOTES

FL#39158

SPACE FOR APPROVER STAMP

**COMPANY INFO**  
 Melchor Consultation Services, LLC.  
 PHONE No.: 305-343-3622  
 EMAIL: CARLOS@MELCHORCS.COM



**DRF / ENG**  
 P.T. / C.M.  
**YEAR**  
 FBC 2020  
**PRODUCT**  
 OGT-700

**PRODUCT LINE DESCRIPTION**  
 OGT - 700 WINDOW WALL SYSTEM  
 LARGE MISSILE IMPACT

**MANUFACTURER**  
 OGT WINDOW PRODUCTS, LLC  
 6910 NW 42ND STREET  
 MIAMI, FL 33166

REVISION #	DATE	COMMENT

CARLOS MELCHOR  
 FL P.E. # 81344  
 C.A.N. # 32186  
 DRAWINGS ARE VALID ONLY  
 WITH A DIGITAL SIGNATURE

SEALED 06-15-21

**DRAWING INFO**  
 PAGE: ISO01